



ASSA ABLOY Glass Solutions

For all commercial and technical information,
please contact one of the companies listed below:

Glass Hardware Belgium

Puursesteenweg 371
2880 Bornem - Belgium
T.+32 - (0)3 - 899 18 22
F.+32 - (0)3 - 899 14 11
info@glasshardware.be
www.glasshardware.be

MAB

Via del Tuscolano 6
40128 Bologna -Italy
T.+39 -051 3540780
F.+39 -051 325108
mab@mab-spa.com
www.mab-spa.com

Stremler

Route Nationale
80860 Nouvion-en-Ponthieu - France
T.+33 -(0)3 22 23 76 00
F.+33 -(0)3 22 23 28 01
accueil@stremler.fr
www.stremler.fr

MAB Glasbeschläge GmbH Deutschland

August-Borsig-Straße 1
DE-03229 Altdöbern
Deutschland
T. +49 -(0)35434 143 40
F. +49 -(0)35434 143 41
mabglasbeschlaege@t-online.de

Stremler Glass Hardware is the specialist in providing the best designed and functional range of glass door hardware solutions.

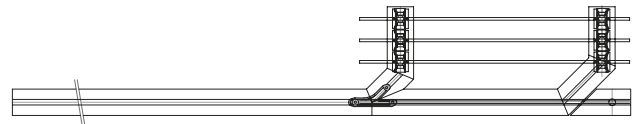
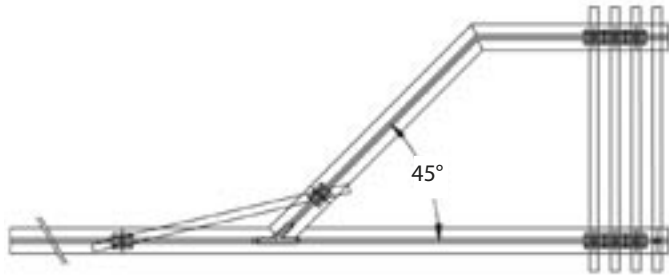
The ASSA ABLOY group is the world's leading manufacturer and supplier of locking solutions, dedicated to satisfying end-user needs for security, safety and convenience.

ASSA ABLOY Glass Solutions

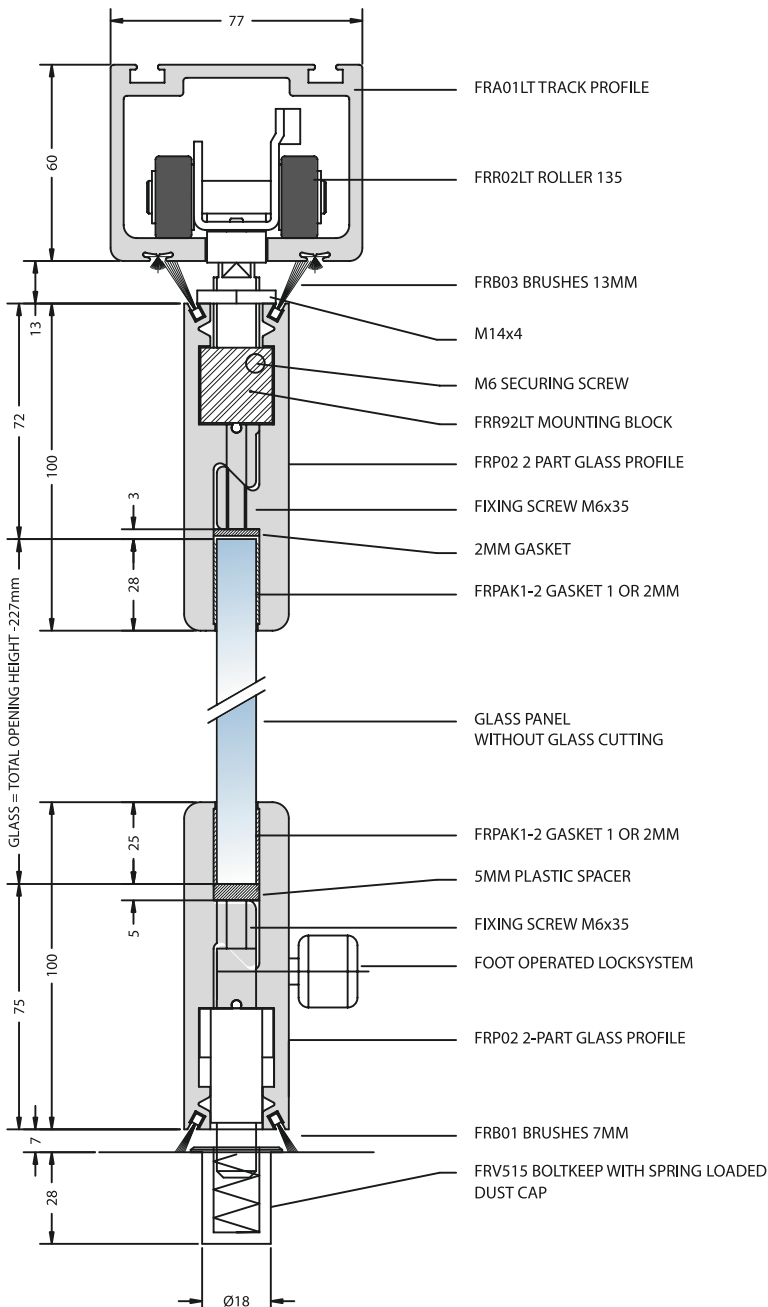


FLEXySTACK 250
FLEXIROL
investing in flexibility

FLEXySTACK 250



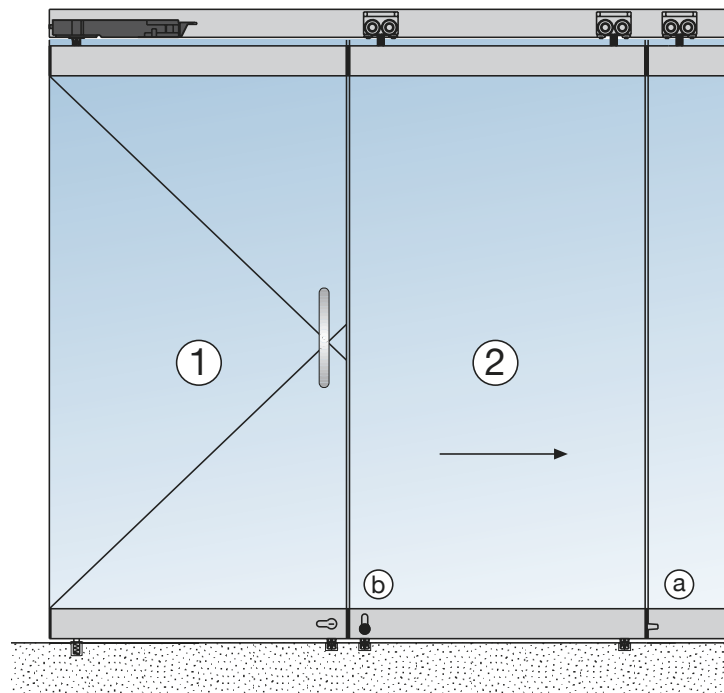
CROSS SECTION (sliding panel) Flexystack 250



The FLEXYSTACK 250 / FLEXIROL

system consists of a mobile partition comprising suspended panels.

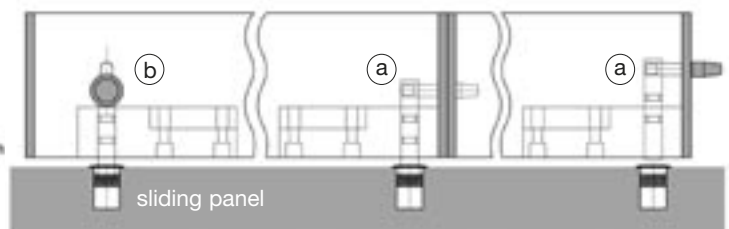
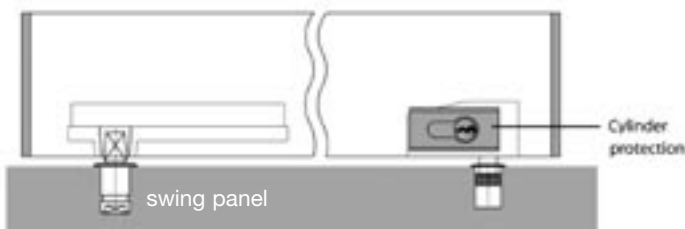
Floor guides are not usually required, and the system is suitable for both internal and external partitions. Each panel is placed manually into its storage position so that the entire bay can be opened up.



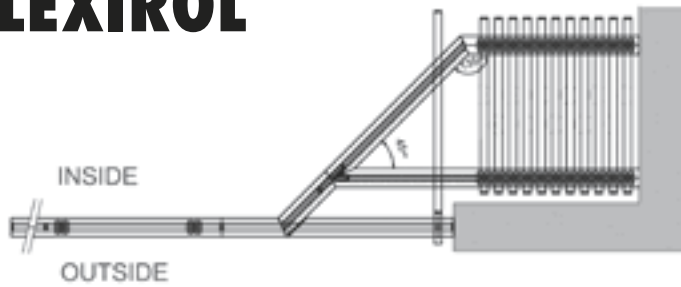
Fixed opening door on a floor spring ⑤ or fixed swing panel on a free swing pivot. Fixed opening door on top track mounted door closer ①, however not applicable to the side of the stacking arrangement.

Depending on the position of the sliding panel, the bottom glass rail can be equipped with two different types of foot operated locks: a pin ① going to the floor but also connecting two sliding panels or a foot lock operated on inside of the wall ②.

Locking: different possibilities



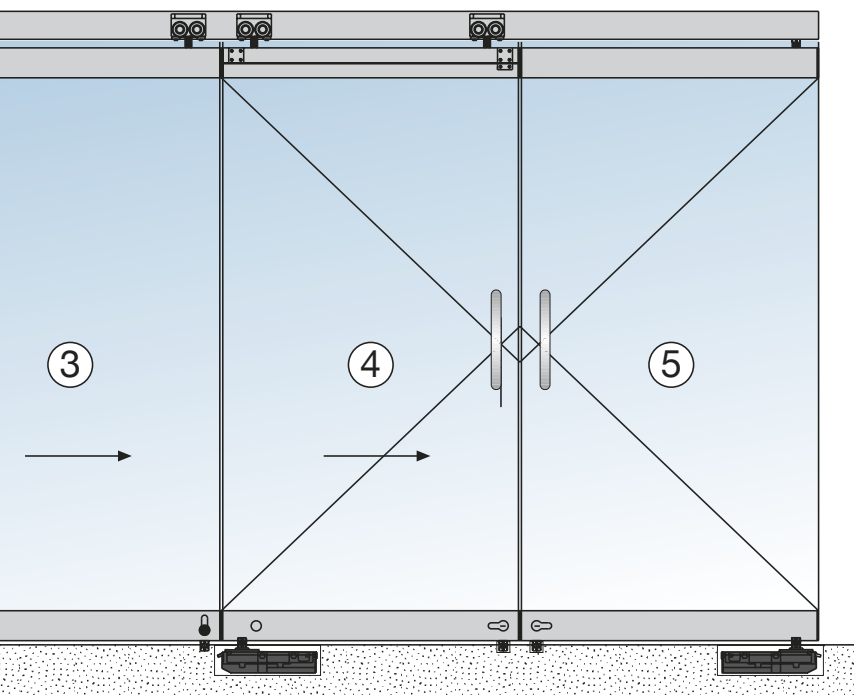
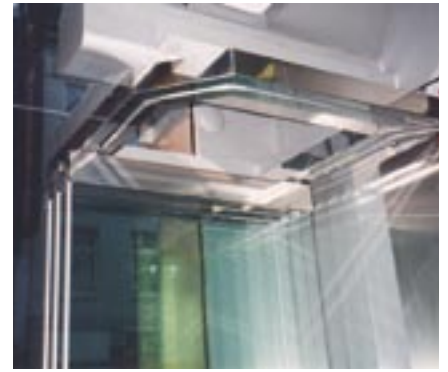
FLEXIROL



The panels can be stored in such a way that they are out of sight or even stored in a separate location, without obstructing the entrance.

FLEXYSTACK 250 is a stacking door system, up to 250 kgs per panel, the track profile has an aesthetic design, the wheels of the stainless steel hangers are covered with a noise reducing material.

FLEXIROL is a heavier system, up to 500 kgs per panel, the heavier track profile is combined with bigger hangers.



A combination of sliding/opening door with floor spring ④, when the panels are closed, one panel is used as an opening door with floor spring.

This opening door can easily be converted into a sliding panel to be placed in the stacking arrangement so that the system is completely open.

Remark: limited door sizes for sliding/opening doors.

