

GLISS

CERNIERA PER PORTE VETRO
HINGE FOR GLASS DOORS



Serrature Meroni S.p.A.

Via G.Natta, 16 - 20030 Lentate sul Seveso - MI - Italy

tel. +39 0362 682701 - fax +39 0362 569581 - e-mail: meroni@serme.it - www.serraturemeroni.it

meroni
serrature

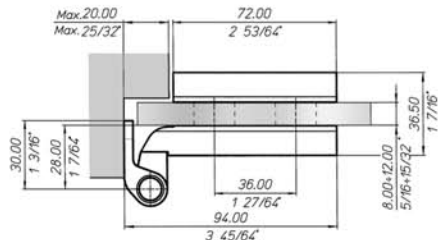
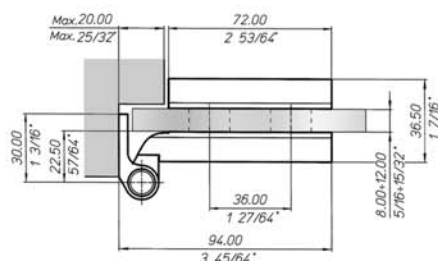
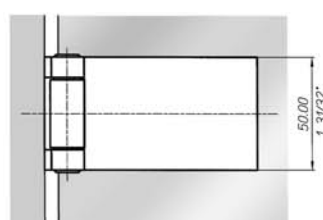
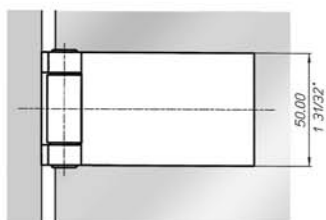
VERSIONE STANDARD - STANDARD VERSION



GAHA1ST6D Braccio Normale
Regular Arm



GAHA1L6D Braccio Lungo (+ mm 5,5)
Long Arm (+ mm 5,5)



Funzionamento

Rotazione 180°

Spessore vetro

da 8 a 12 mm

Peso porta

fino a 50 kg 2 cerniere

da 50 a 70 kg 3 cerniere

Larghezza porta

cm 90 max

Regolazione finale montaggio

con bussole eccentriche mm 3

Stipiti

da 30 a 46

Distanza perno vetro

mm 22,5 (normale)

mm 28 (lungo)

Materiale

alluminio

Operation

Rotating 180°

Glass thickness

8 to 12 mm

Door weight

up to 50 kg 2 hinges

50 to 70 kg 3 hinges

Door width

max 90 cm

Assembly final adjustment

with eccentric bushes 3 mm

Jambs

from 30 to 46

Pin-glass distance

22,5 mm (regular)

28 mm (long)

Material

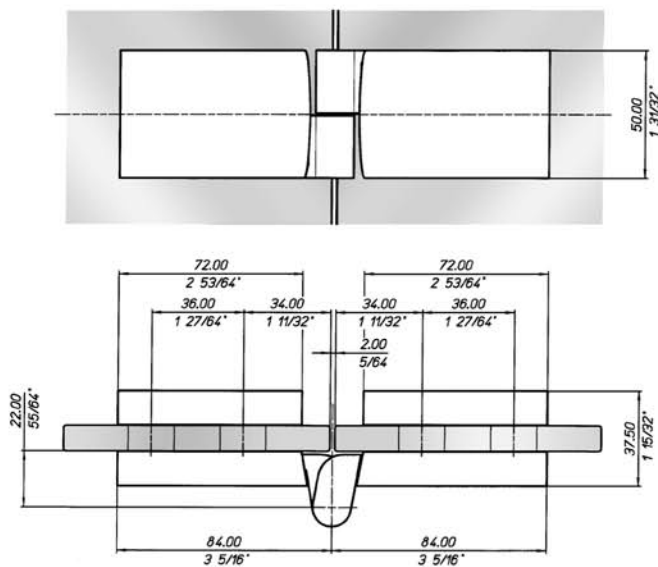
aluminium

| | Finiture Finishes | Braccio normale Regular arm | Braccio lungo Long arm | |
|--|----------------------------------|--|----------------------------------|---|
| NE | verniciato nero black coating | disponibile available | non disponibile not available | • |
| US15 | nickel opaco matt nickel | a richiesta (min.300 pz) upon request (min.300 pcs) | non disponibile not available | • |
| US26 | cromo lucido polish chrome | disponibile available | non disponibile not available | • |
| US26D | cromo opaco matt chrome | disponibile available | disponibile available | |
| • Prego contattare Meroni in caso di progetti speciali Please contact Meroni for special enquiries and quantities | | | | |

VERSIONE VETRO-VETRO - GLASS TO GLASS VERSION



GAHA1G16D Vetro - Vetro
Glass to Glass



| Funzionamento | Operation |
|------------------------------|----------------------------|
| Rotazione 180° | Rotating 180° |
| Spessore vetro | Glass thickness |
| da 8 a 10 mm | 8 to 10 mm |
| Peso porta | Door weight |
| 40 kg max | max 40 kg |
| Larghezza porta | Door width |
| cm 80 max | max 80 cm |
| Regolazione finale montaggio | Assembly final adjustment |
| con bussole eccentriche 3 mm | with eccentric bushes 3 mm |
| Materiale | Material |
| alluminio | aluminium |

| | Finiture Finishes | Vetro - Vetro Glass to Glass | |
|--|----------------------------------|-----------------------------------|---|
| NE | verniciato nero black coating | non disponibile not available | • |
| US15 | nickel opaco matt nickel | non disponibile not available | • |
| US26 | cromo lucido polish chrome | non disponibile not available | • |
| US26D | cromo opaco matt chrome | disponibile available on stock | |
| • Prego contattare Meroni in caso di progetti speciali Please contact Meroni for special enquiries and quantities | | | |