

Art./Item: 102

**Due mandate, centrale,
movimento comandato
dalla maniglia**

Two throws, central,
movement controlled
by handle



n.3
cod. 34.00.65 

n.3 KA
cod. 34.00.65 

CODE
CODE

EDR
BACKSET

HAND



E

102.00.00

—

—

2

102.00.01

—

—

2

Art./Item: 105

Due mandate, centrale

Two throws, central



n.3
cod. 34.00.65 

105.00.00

—

—

2

Art./Item: 109 KC

Una mandata, centrale

One throw, central



n.3
cod. 91.01.75 

n.3
cod. 91.01.10 

1091.00.03

—

—

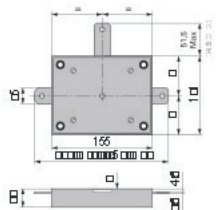
2

1091.00.13

—

—

2

Deviatore centrale da applicare, doppio rinvioRim central deviator,
double rods deviatorper articolo/for item
102CODICE
CODEECCO
BACKSETMANO
HAND

103.00.00

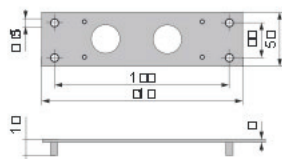
-

-

1

Piastra di fissaggio in acciaio

Supporting plate in steel

per articolo/for item
102

9999.00.32

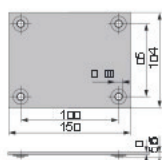
-

-

1

Piastra di fissaggio in acciaio

Supporting plate in steel

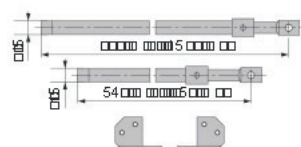
per articolo/for item
103

9999.00.31

-

-

1

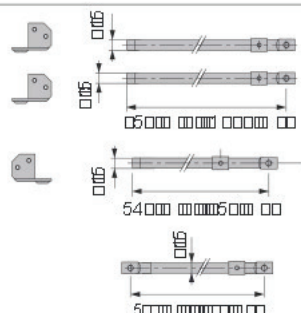
Serie aste per applicazioni a due chiusure, zincateSeries of rods for two closure
locks, zinc-platedper articolo/for item
102

9999.00.08

-

-

1

Serie aste per applicazioni a tre chiusure, zincateSeries of rods for three
closure locks, zinc-platedper articolo/for item
102/103

9999.00.07

-

-

1