

# Serie ELITE

## *ELITE Series*



ASSAABLOY, the global leader  
in door opening solutions



# Serrature e accessori

## Locks and patch fittings

### Caratteristiche tecniche:

- La gamma di accessori Elite consente la realizzazione di ogni tipo di vetrata in vetro temprato.
- Garantisce l'assemblaggio sia di parti di vetrate fisse che mobili quali ante a singola e doppia azione.
- Grazie alla lunga e consolidata esperienza sul vetro la MAB ha sviluppato la serie Elite con l'intento di rendere semplice e veloce la preparazione del vetro.
- La serie Elite garantisce il massimo serraggio possibile rapportato alle dimensioni compatte dell'accessorio.
- La serie Elite è adattabile ai più comuni spessori del vetro e ogni accessorio della serie è equipaggiato con le speciali guarnizioni Centellen adatte a coprire spessori da 8 -10 e 12mm.
- Gli accessori angolari e da sopraluce consentono un'ampia regolazione del punto di rotazione da 52 a 58 mm rispetto al bordo.
- Gli accessori della serie Elite sono realizzati tutti con materiali di altissima qualità atti a garantire elevata affidabilità e durata nel tempo.
- L'ampio range di finiture permette di soddisfare l'esigenze più specifiche.

### Technical features:

- The Elite range of patch fittings allows the construction of each type of tempered glass.
- It ensures the assembly of both fixed and mobile parts of single and double action doors.
- With long experience on architectural glass, MAB has developed the Elite series for the quick and easy preparation of glass.
- The Elite range ensure the highest possible clamping compared to compact size of the patch fittings.
- The Elite series is adaptable to the most common glass thicknesses and every accessory series is equipped with special seals Centellen suitable to cover thicknesses from 8-10 and 12mm.
- Adjustable patches and overpanel patches have been designed to permit an angle adjustment allows a wide pivot point 52 to 58 mm from the edge.
- The Elite series patch fittings are made with the highest quality materials to ensure high reliability and durability.
- The wide range of finishes allows to satisfy the most specific needs.

### Caratteristiche tecniche:

**Centellen® WS 3855** è adatta alle applicazioni che sono soggette a stress termici e meccanici.

#### RESISTENZA CHIMICA

- Idrocarburi come olio e solvente
- Alcool, glicoli, soluzioni acquose
- Acqua e vapore fino a 150°C
- Deboli soluzioni alcaline e acide

#### APPLICAZIONE DIPENDENTE DA PRESSIONE E TEMPERATURA

Le condizioni di temperatura e pressione massima non devono verificarsi simultaneamente !

### Technical features:

**Centellen® WS 3855** is grade is for joints that are subject to thermal and mechanical stress.

#### CHEMICAL RESISTANCE

- Hydrocarbons such as oil or solvent
- Alcohols, glykols, aqueous solutions
- Water and steam up to 150°C
- Weak alkaline solutions and acids

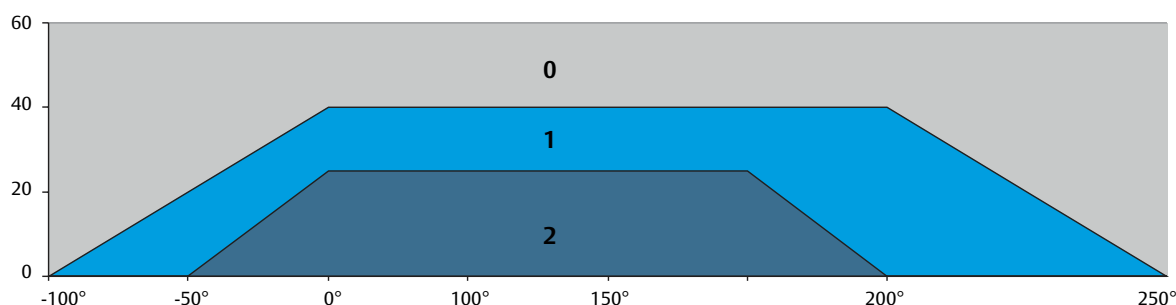
#### APPLICATION DEPENDING ON PRESSURE AND TEMPERATURE

Costant maximum temperature and maximum pressure should not occur simultaneously !

## Centellen® WS 3855

I campi di applicazione dipendono da pressione e temperatura

Applications depending on pressure and temperature



0 = Prove necessario / Test Necessary

1 = Possibile / Possible

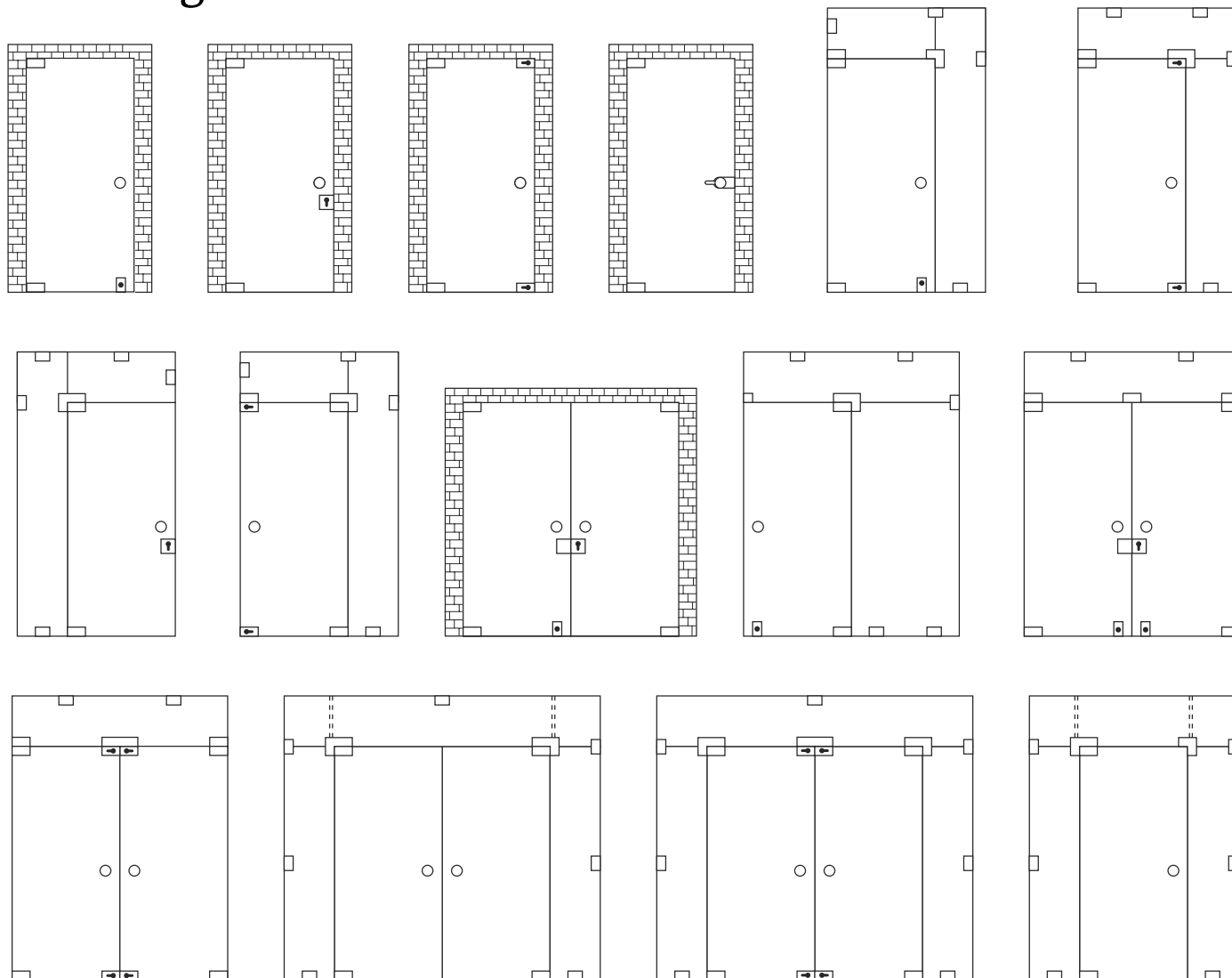
2 = Raccomandazione / Recommendation

# Installazione standard

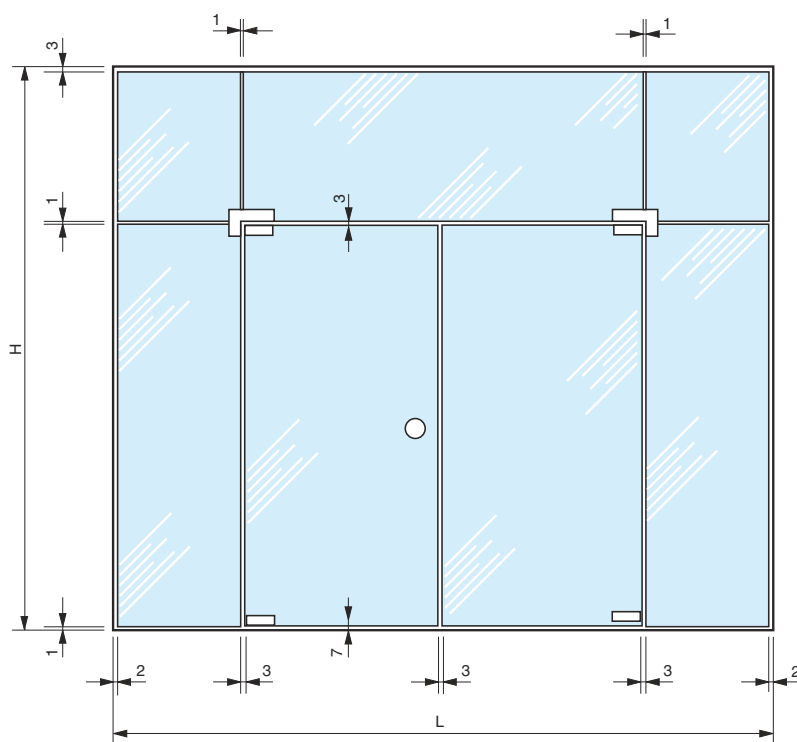
## tipi di vetrate

## *Standard installation*

## glass door assemblies



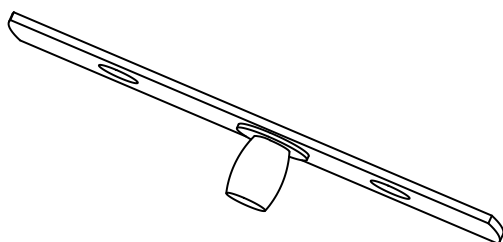
Luci consigliate  
*Luci consigliate*



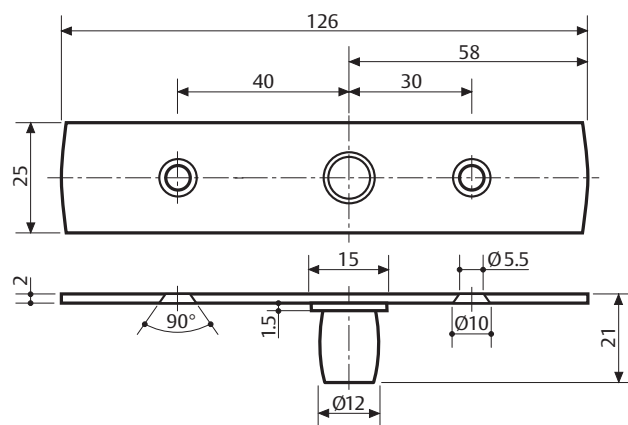


ASSA ABLOY

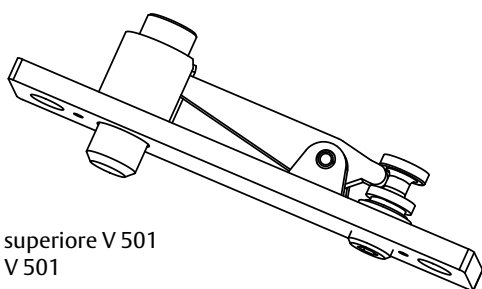
V 502



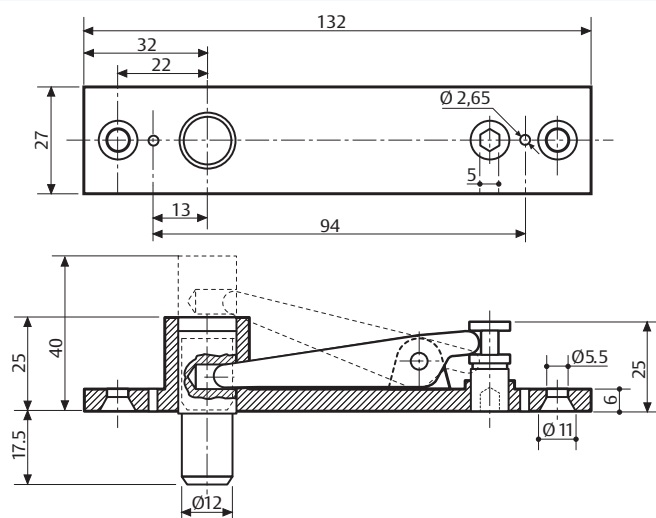
Piastra con perno per cerniera superiore ART. 501  
Plate with pivot for top hinge V 501



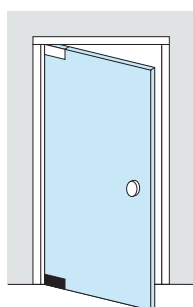
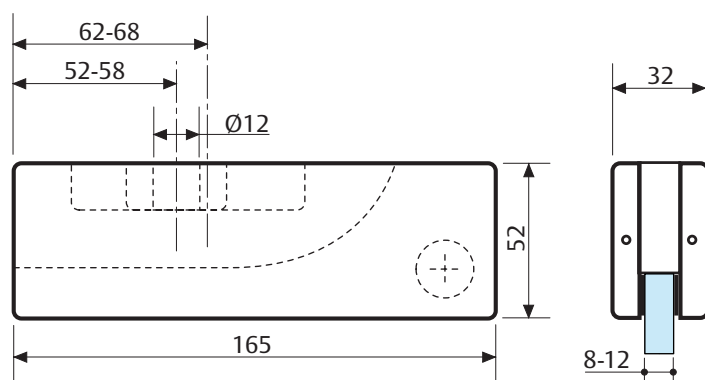
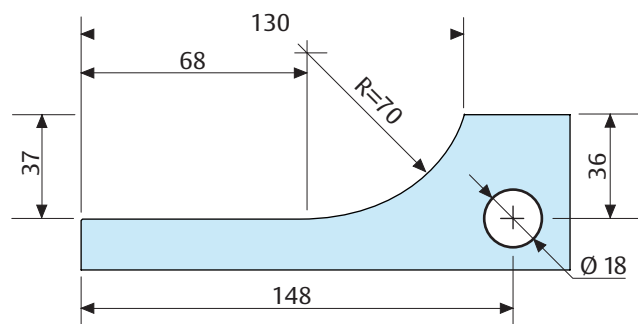
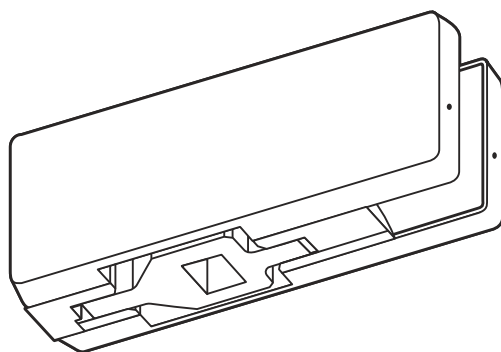
AC 233



Perno per cerniera superiore V 501  
Pivot for top hinge V 501



V 500



Cerniera inferiore per porte a doppia azione  
Bottom hinge for centre-hung doors



Inox satinato  
Satin S/Steel



Oro lucido  
Polished Gold

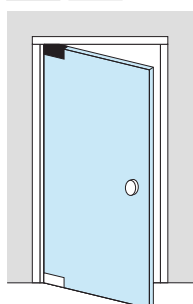
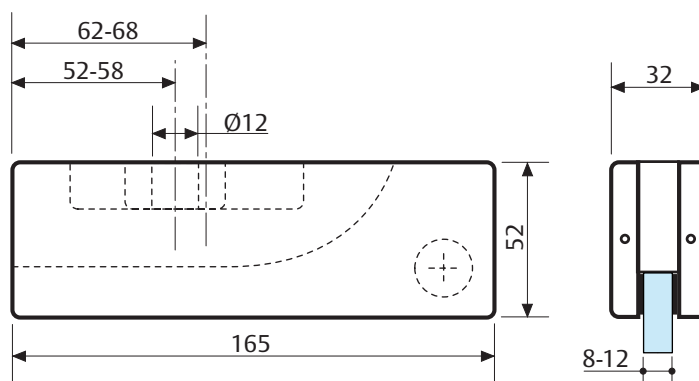
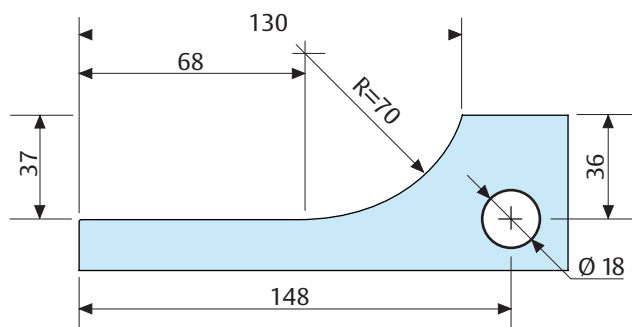
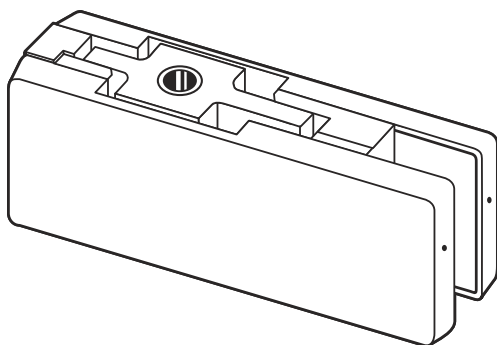


Inox lucido  
Polished S/Steel



Alluminio  
Aluminium anodized

V 501



Cerniera superiore per porte a doppia azione  
Top hinge for centre-hung doors



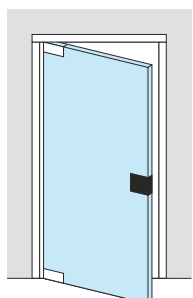
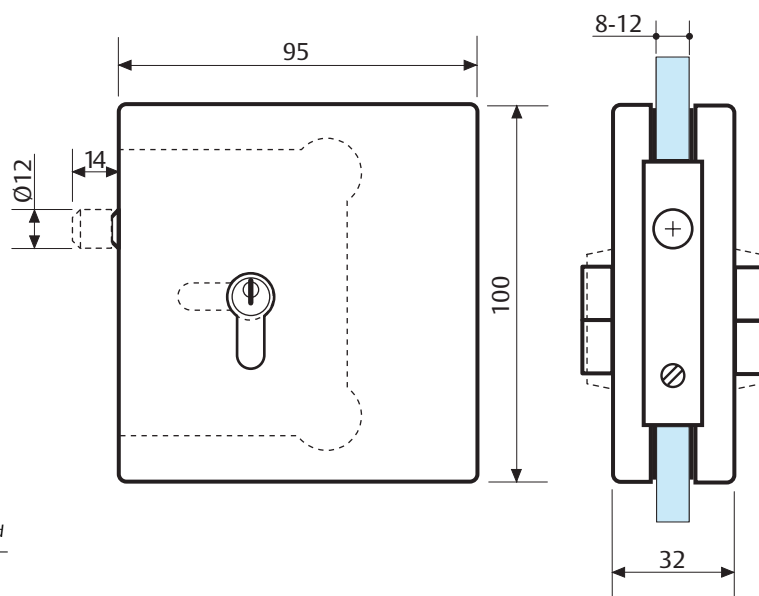
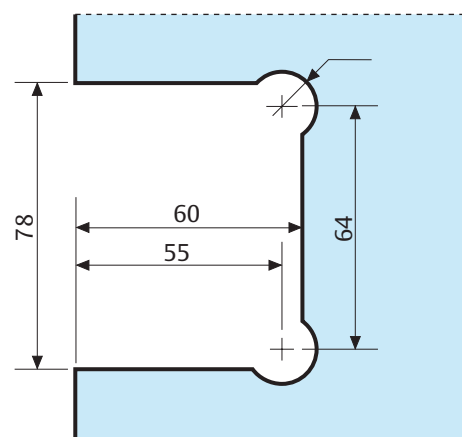
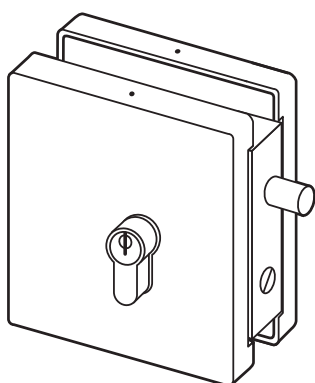
Inox satinato  
Satin S/Steel

Oro lucido  
Polished Gold

Inox lucido  
Polished S/Steel

Alluminio  
Aluminium anodized

V 522



Serrature centrale (cilindro non incluso)  
Centre lock (cylinder not included)



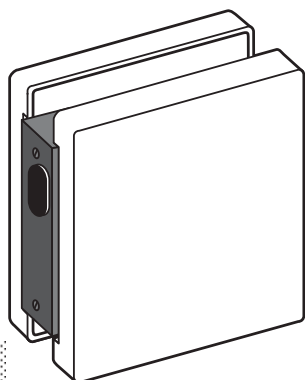
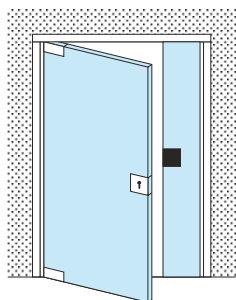
Inox satinato  
Satin S/Steel

Oro lucido  
Polished Gold

Inox lucido  
Polished S/Steel

Alluminio  
Aluminium anodized

## V 523



Controcartella per serratura centrale  
Strike patch for centre lock



Inox satinato  
Satin S/Steel



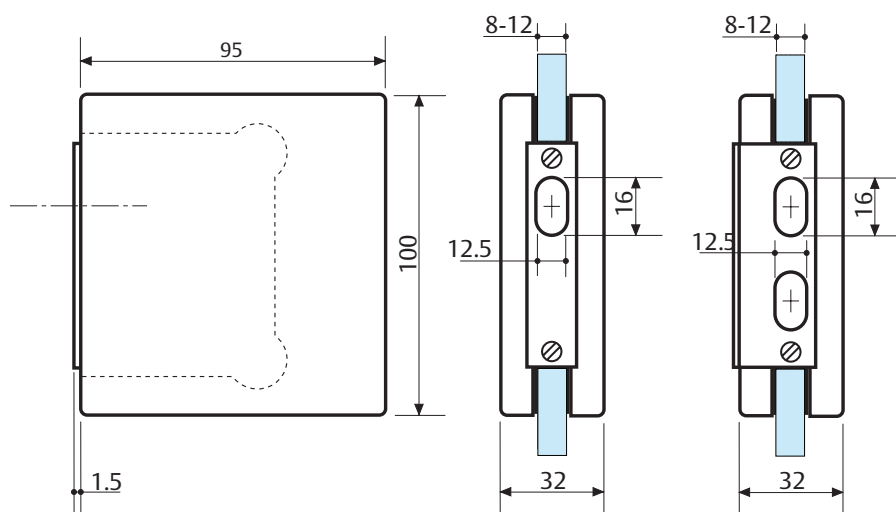
Oro lucido  
Polished Gold



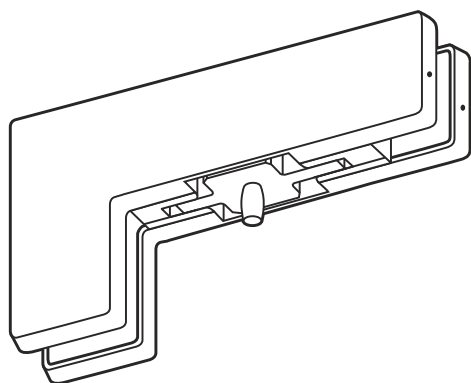
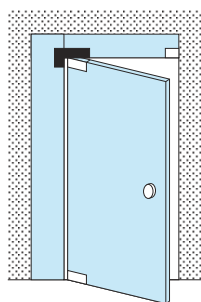
Inox lucido  
Polished S/Steel



Alluminio  
Aluminium anodized



## V 508



Reggisopraluce e fisso laterale (Lato cerniera) con perno  
Transom and side panel ink patch (hinge side) with pivot



Inox satinato  
Satin S/Steel



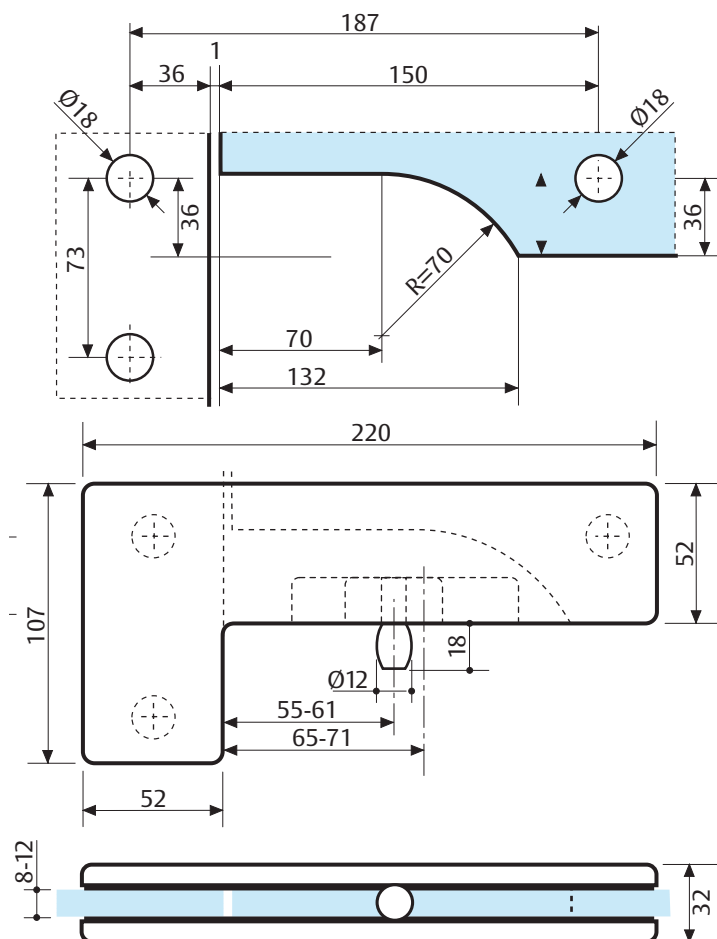
Oro lucido  
Polished Gold



Inox lucido  
Polished S/Steel



Alluminio  
Aluminium anodized







ASSA ABLOY Italia S.p.A.

Sede legale/Legal address:

Via Bovaresa, 13 - 40017 San Giovanni in Persiceto (BO) Italy  
Tel. +39 051 6812411 - Fax +39 051 827486

[info@assaabloy.it](mailto:info@assaabloy.it) - [www.assaabloy.it](http://www.assaabloy.it)

ASSA ABLOY is the  
global leader in door  
opening solutions,  
dedicated to satisfying  
end-user needs for  
security, safety and  
convenience.

[www.assaabloy.com](http://www.assaabloy.com)

