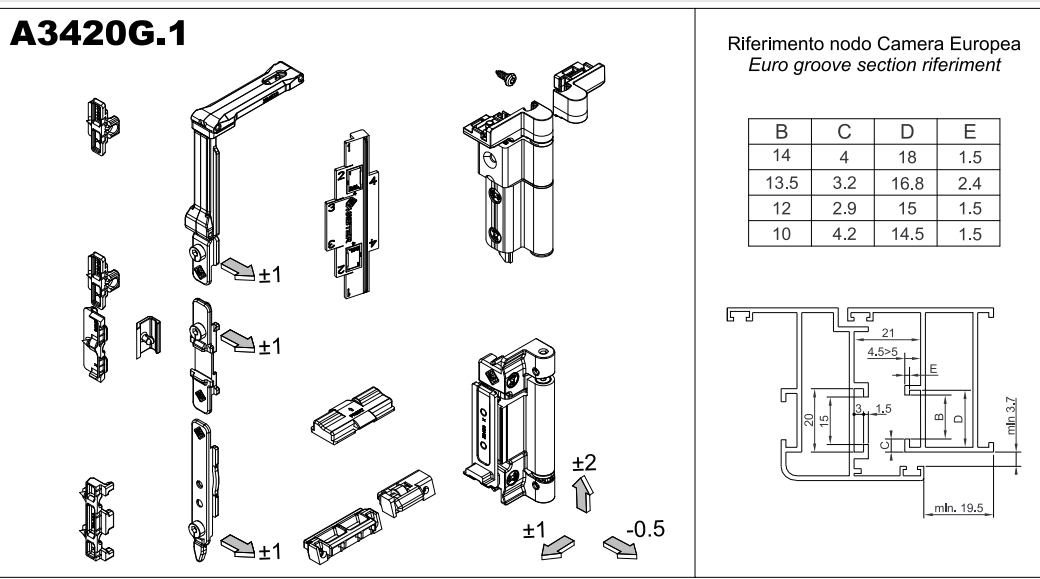
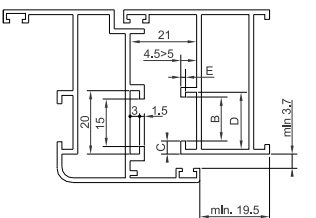


Kit anta ribalta - Art. 3420G.1 Per sistemi Camera Europea
Kit for tilt and turn - Art. 3420G.1 For Euro Groove system



Riferimento nodo Camera Europea
Euro groove section referiment

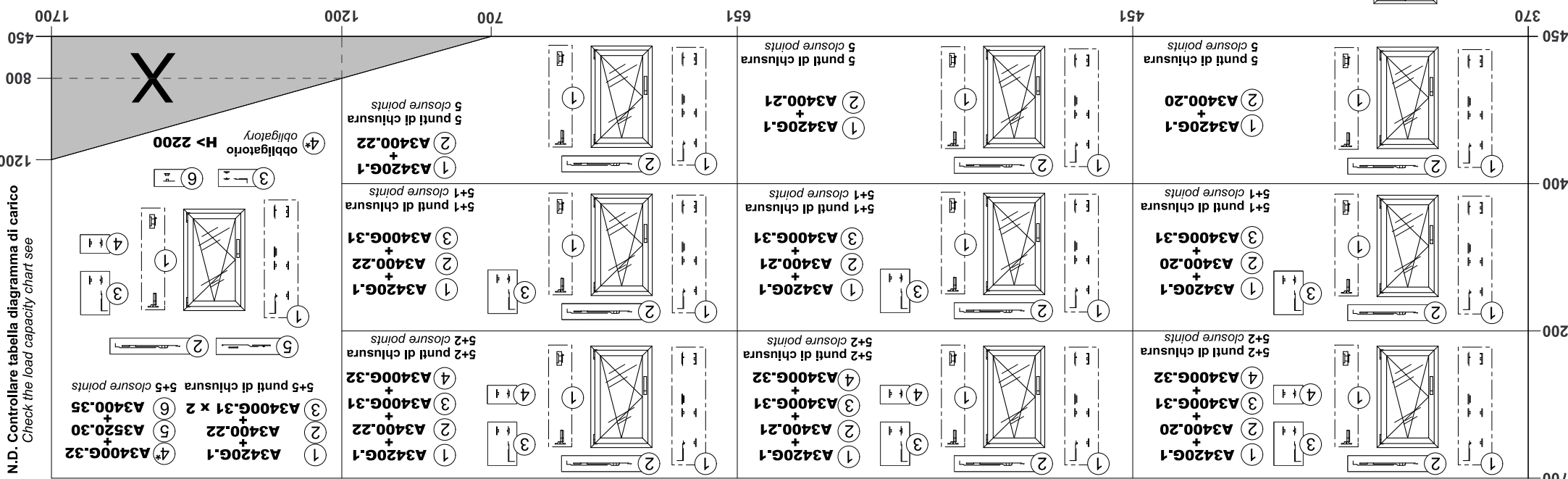
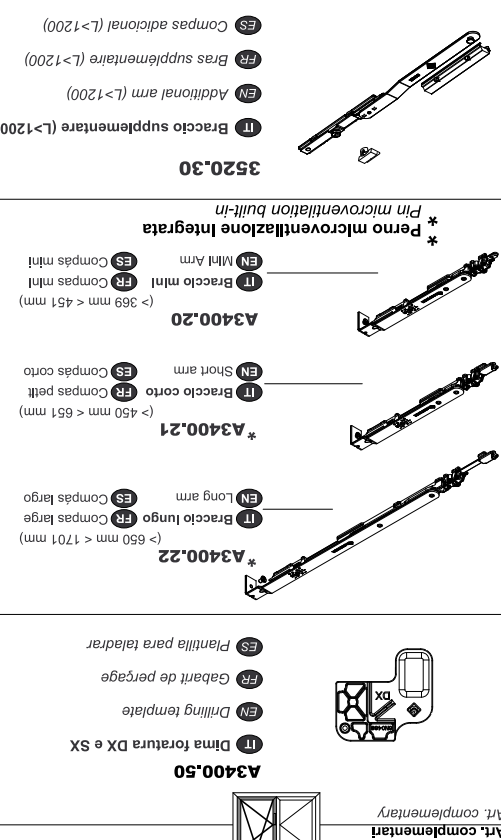
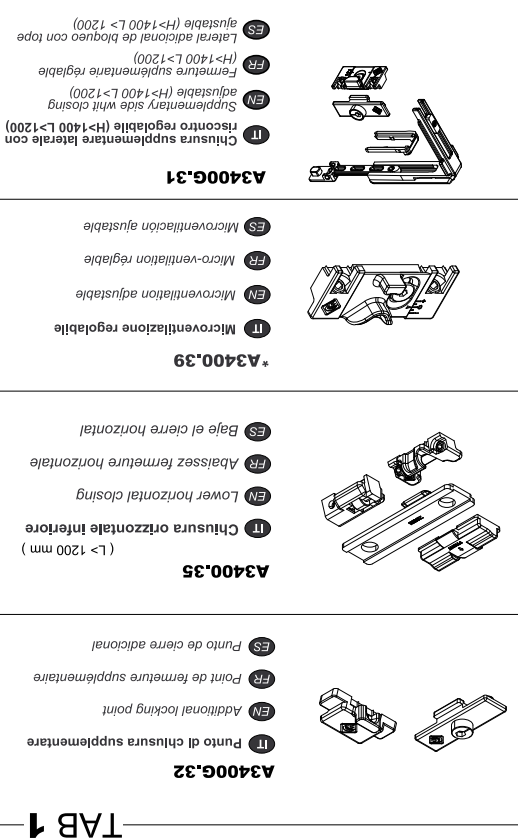
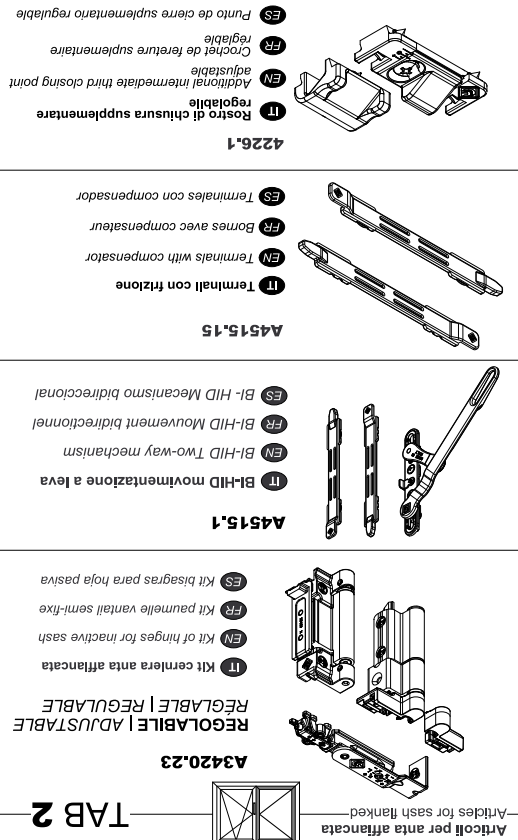
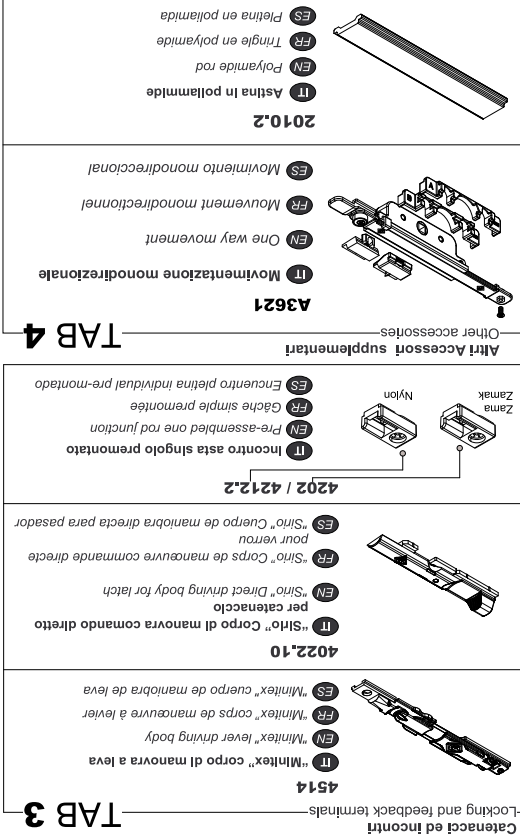
B	C	D	E
14	4	18	1.5
13.5	3.2	16.8	2.4
12	2.9	15	1.5
10	4.2	14.5	1.5



kg	*>100Kg <160Kg										<=100 Kg																				
2700	50	40	50	37	47	30	40	25	34	21	30	19	26	16	24	15	22	13	20	12	18	11	17	11	16	10	15	9	14	9	
2600	50	42	50	38	49	31	41	26	35	22	31	19	27	17	25	15	22	14	21	13	19	12	18	11	16	10	15	9	14	9	
2500	50	43	50	40	50	32	43	27	37	23	32	20	28	18	26	16	23	15	21	13	20	12	18	11	17	11	16	9	15		
2400	50	45	50	42	50	33	44	28	38	24	33	21	30	19	27	17	24	15	22	14	21	13	19	12	18	11	17	10	16	10	
2300	50	47	50	43	50	35	46	29	40	25	35	22	31	19	28	17	25	16	23	14	21	13	20	12	19	12	17	10	16	10	
2200	50	49	50	45	50	36	48	30	42	26	36	23	32	20	29	18	26	17	24	15	22	14	21	13	19	12	18	11	17	11	
2100	50	50	50	48	50	38	50	32	44	27	38	24	34	21	30	19	28	17	25	16	23	15	22	14	20	13	19	10	16	10	
2000	50	50	50	50	50	40	50	33	46	29	40	25	36	22	32	20	29	18	27	17	25	15	23	14	21	13	20	11	17	11	
1900	50	50	50	50	50	42	50	35	48	30	42	26	37	23	34	21	31	19	28	18	26	16	24	15	22	14	19	11	18	11	
1800	50	50	50	50	50	44	50	37	50	32	44	28	40	25	36	22	32	20	30	19	27	17	25	16	21	13	20	12	19	12	
1700	50	50	50	50	50	47	50	39	50	34	47	29	42	26	38	24	34	21	31	20	29	18	24	15	23	14	21	12	20	12	
1600	50	50	50	50	50	50	50	42	50	36	50	31	44	28	40	25	36	23	33	21	28	17	26	16	24	15	23	11	18	11	
1500	50	50	50	50	50	50	50	44	50	38	50	33	47	30	43	27	39	24	36	22	30	18	27	17	26	16	20	9	15	9	
1400	50	50	50	50	50	50	50	48	50	41	50	36	50	32	46	29	42	26	34	21	32	20	29	18	23	14	17	10	16	10	
1300	50	50	50	50	50	50	50	50	50	44	50	38	50	34	49	31	40	25	37	23	34	21	26	16	20	12	18	7	12	7	
1200	50	50	50	50	50	50	50	50	50	48	50	42	50	37	48	30	44	27	40	25	31	19	23	14	21	13	13	4	6		
1100	50	50	50	50	50	50	50	50	50	50	45	50	36	50	33	48	30	36	23	27	17	25	16	16	10	7	3			X	
1000	50	50	50	50	50	50	50	50	50	50	50	50	50	40	50	36	44	27	32	20	30	18	18	11	9	5		X		X	
900	50	50	50	50	50	50	50	50	50	50	50	50	50	44	43	27	39	24	24	15	11	7		X		X		X		X	
800	50	50	50	50	50	50	50	50	50	50	50	50	50	50	33	48	30	29	18	13	8		X		X		X		X		X
700	50	50	50	50	50	50	50	50	50	50	50	43	50	38	18	11		X		X		X		X		X		X		X	
600	50	50	50	50	50	50	50	50	50	50	50	50	50	50	33	24	15		X		X		X		X		X		X		X
500	50	50	50	50	50	50	50	50	50	50	50	46		X		X		X		X		X		X		X		X		X	
H	L	370	400	500	600	700	800	900	1000	1100	1200	1300	1400	1500	1600	1700															

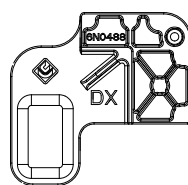
Norma di riferimento Europea UNI EN 13126-1:2006 / 13126-8:2006 Certified according to European Standard UNI EN 13126-1:2006 / 13126-8:2006									
1550x1400	4	160	0	1	4	-	8	-	-
Dimensione di prova	Durabilità	Massa	Resistenza fuoco	Sicurezza di utilizzo	Resistenza alla corrosione	Resistenza effrazione	Applicazione	Categoria d'uso	
Test size	Durability	Mass	Fire resistance	Safety in use	Corrosion resistance	Security	Applicable part	Category of use	

Campo applicazione Peso anta Max anta 160 Kg *Per anta con peso >100 kg VITE FISSAGGIO OBBLIGATORIA Spessore vetro Max senza camera d'aria	IT	Domaine D'Application Poids max du vantail 160 Kg *Pour vantail avec poids >100 kg FIXATION PAR VIS REQUISE Epaisseur du vitrage Max sans vide d'air	FR
Application Field Leaf max weight 160 Kg *For Leaf weight >100 kg SCREW FIXING REQUIRED Glass thickness Max without air space	EN	Campo de Aplicacion Peso max de la hoja 160 Kg *Hoja de peso > 100 kg FIJACION POR TORNILLO NECESARIO Espesores del cristal Max no cámara de aire	ES
20	IT	Anta eseguibile con spessore vetro Max 20 mm	
	EN	Sash size executable with Max glass thickness 20 mm	
	FR	Vantail Exécutable avec Max verre épaisseur 20 mm	
	ES	Hoja ejecutable con Max vidrio espesor 20 mm	
	X	Dimensione non eseguibile	
	EN	Not feasible	
	FR	Non réalisable	
	ES	No ejecutable	

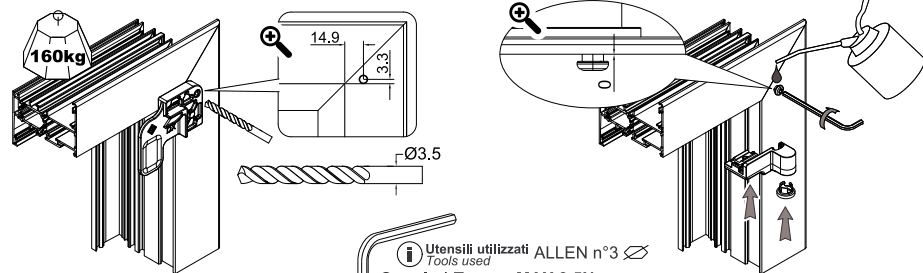


TELAIO - FRAME

A3400.50



IT Dima foratura DX e SX
EN Drilling template
FR Gabarit de perçage
ES Plantilla para taladrar



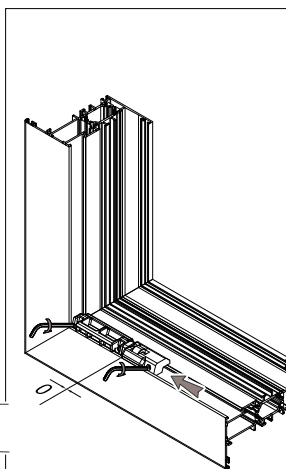
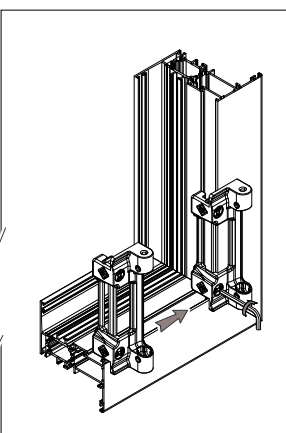
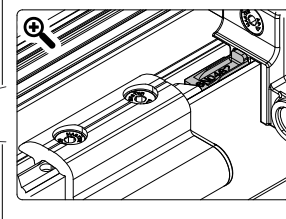
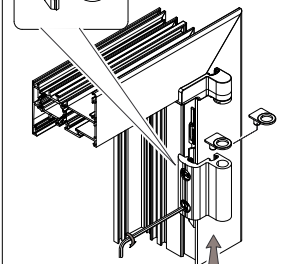
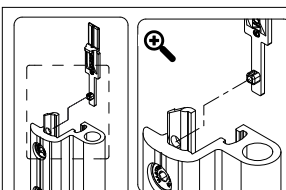
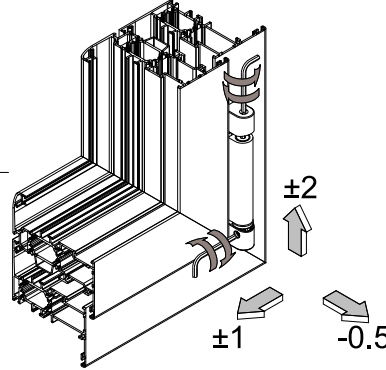
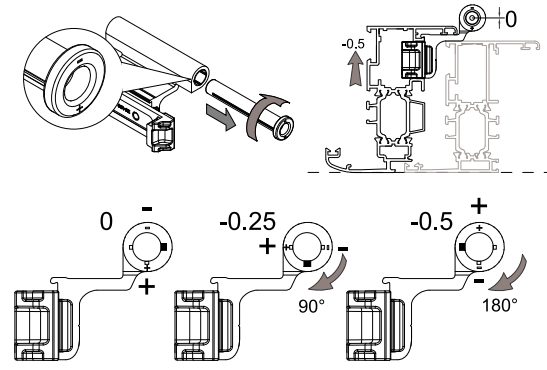
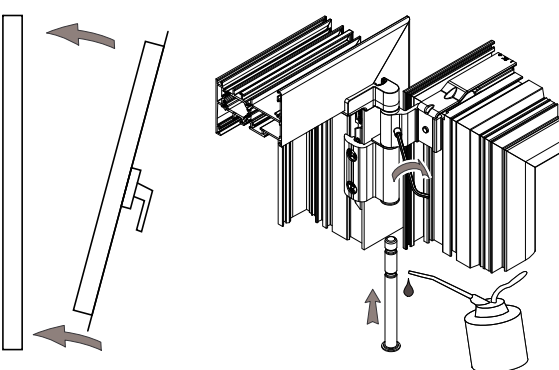
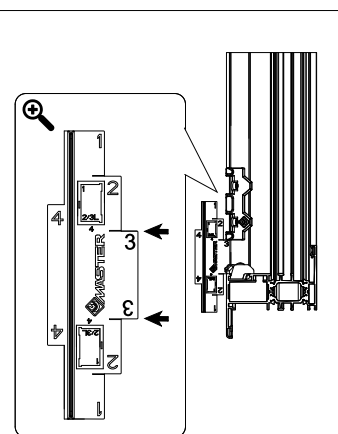
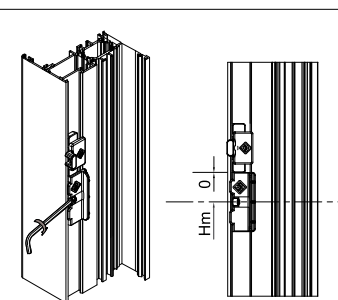
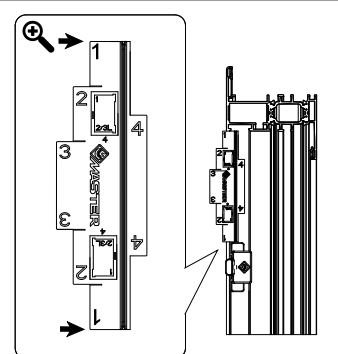
Utensili utilizzati
Tools used
Coppia / Torque MAX 3.5Nm

ATTENZIONE / WARNING
NON OBBLIGATORIO PER PESI ≤100kg
NOT OBLIGATORY FOR WEIGHT ≤100kg
NON OBLIGATOIRE POUR LES POIDS ≤ 100 kg
NO OBLIGATORIO DE PESO ≤ 100kg

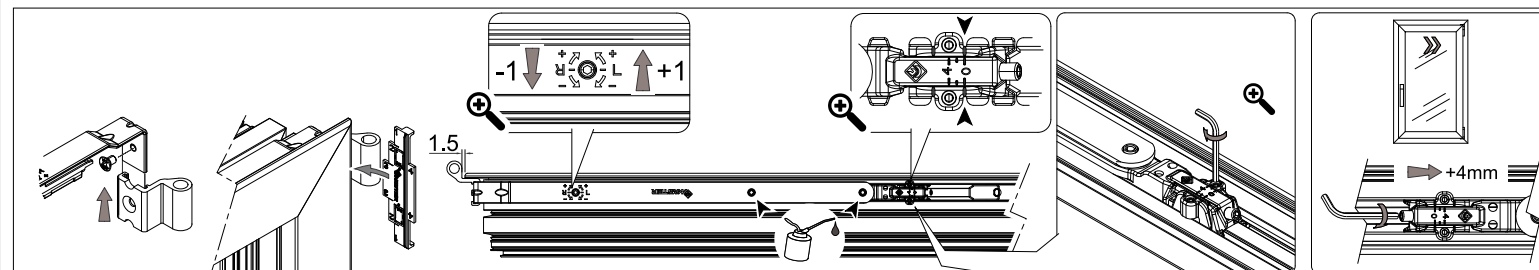
A3400.39

*Microventilazione opzionale
*Microventilation optional

*A3400.21
*A3400.22



ANTA - SASH



A3400.22

A3520.30 Opzionale Optional

L-692

L-339

A3400.20

L-355

*A3400.21

L-543

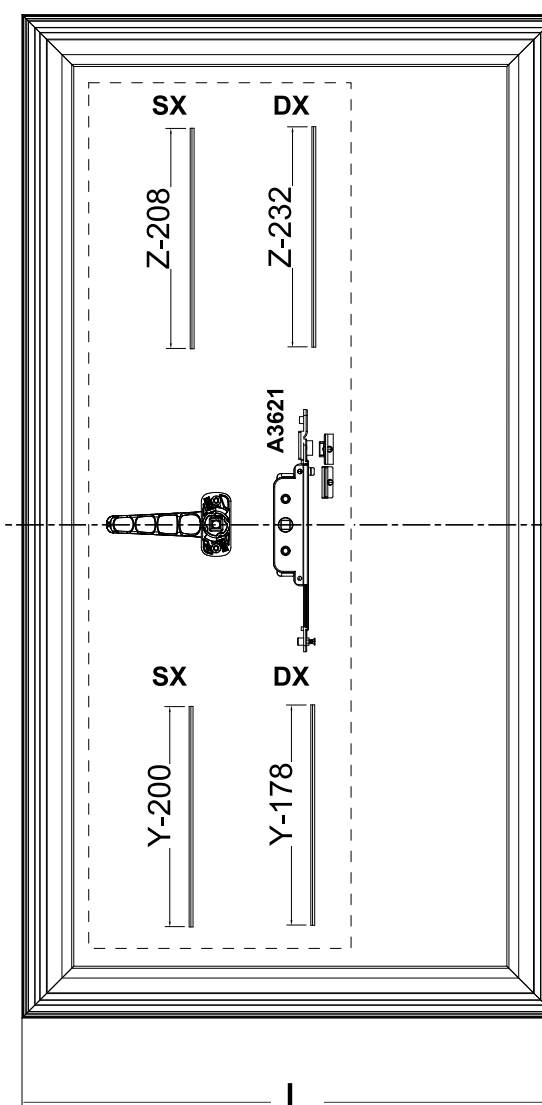
*A3400.22

A3400G.31 H>1400mm

H/2-166

A3400G.32 H>2200mm

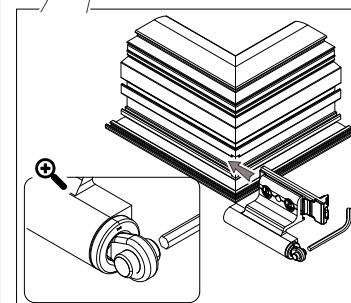
H/2-400



A3400G.31/A3400.35

L>1200mm

L/2-132



Per eventuali chiarimenti chiedere
info al nostro Uff. Tecnico
tel. 080.4959823

For other information contact our
technical office at:
+39.08.04.95.98.23

PER L>500 E APERTURA IMPEDITA A 180° BRACCIO LIMITATORE CONSIGLIATO
IT IS RECOMMENDED TO USE A LIMITER ARM FOR WINDOWS
WIDTH >500 AND FOR WINDOWS WITH 180° RESTRICTED OPENING

A1203A.6
>36L <451

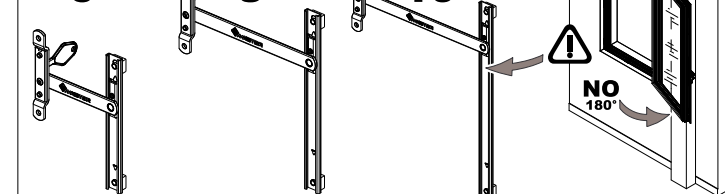
6"

A1203A.8
>450 <651

8"

A1203A.10
>650 <1701

10"



NO 180°