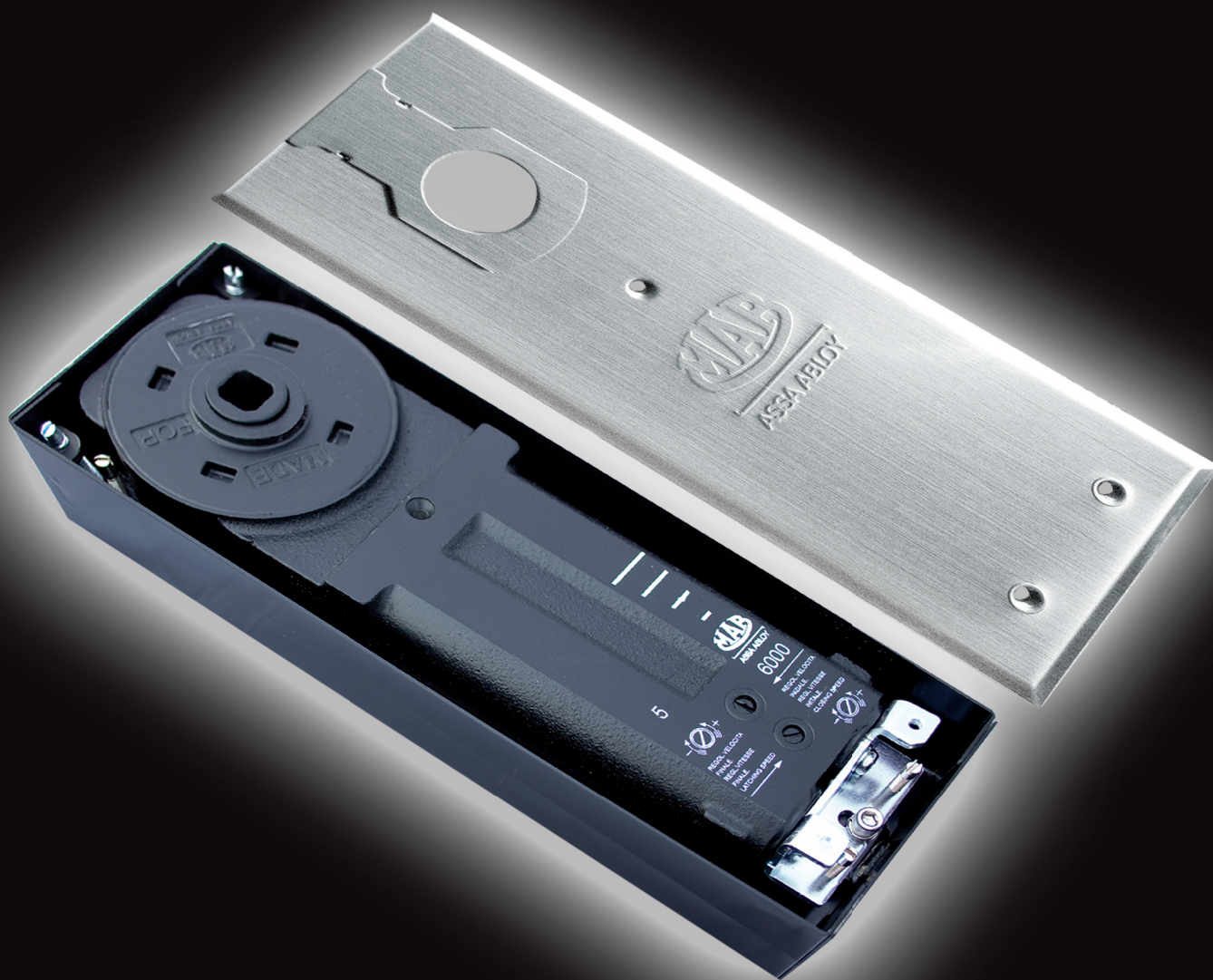


# Serie 6000

## 6000 Series



ASSA ABLOY, the global leader  
in door opening solutions



# Chiudiporta a pavimento Serie 6000 per solette di basso spessore con regolazione verticale e perno intercambiabile

## 6000 Series floor spring for thin slabs with vertical adjustment and interchangeable spindle

### Caratteristiche tecniche:

- Unica dimensione di corpo con tre forze di chiusura EN2-3-4 per porte da 750 a 1100 mm di larghezza.
- Universale per porte destre, sinistre o a ventola.
- Cassetta a murare di soli 40mm di altezza.
- Corpo in ghisa.
- Adatto per porte in legno, metallo, vetro.
- Particolarmente indicato per solette di basso spessore.
- Regolazione in tutti sensi nella cassetta, per risolvere facilmente i problemi di complanarità del pavimento e dei montanti laterali senza necessità di smontare la porta.
- Facilita l'installazione di porte in vetro a ventola, grazie al punto di rotazione modificabile 53 - 61 mm senza necessità di arretrare la custodia a murare rispetto alla dima di posa.
- Ampia regolazione verticale nella cassetta in aggiunta alla possibilità di perni prolungati.
- Controllo idraulico su ~130° in entrambi i sensi di chiusura.
- Velocità di chiusura controllate da due valvole indipendenti non critiche di facile regolazione.
- Chiusura dolce o con potente scatto finale regolato da valvola per assicurare il tipo di chiusura più adatto.
- Varietà di perni disponibili: italiano, tedesco, francese.
- Perno intercambiabile da 0 a + 30 mm.
- Finiture della piastra di copertura: inox lucido, inox satinato, ottone lucido.
- Tutti i modelli hanno certificazione prodotto EN1154. I modelli forza EN3-4, versione senza fermaporta hanno la conformità

### Features:

- One body size in three force sizes EN2-3-4 for doors 750 - 1100 mm wide.
- Universal for right, left or double action doors.
- Cement box only 40 mm high.
- Cast iron body.
- Suitable for timber, metal and glass doors.
- Recommended for thin slabs.
- Adjustment in all directions within the cement box to help solve the problems of uneven floors without taking down the door.
- Pivot point 53 - 61 mm without re-locating the cement box thanks to one only template. Particularly user friendly in case of double action glass doors.
- Vertical adjustment within the cement box in addition to possibility of extended spindle.
- Hydraulic control over ~130° in both swings.
- Closing speed controlled by two easily adjustable non critical valves.
- Soft closing or powerful latching action adjusted by valve to ensure proper closing also in case of hard to latch locks.
- Variety of available spindles: square Italian, square French, rectangular German.
- Interchangeable spindle from 0 to + 30 mm.
- Architectural finishes: coverplates in polished s/steel, satin s/steel, polished brass.
- All models have quality certification EN1154. Versions force EN3-4, without Hold Open, have conformity

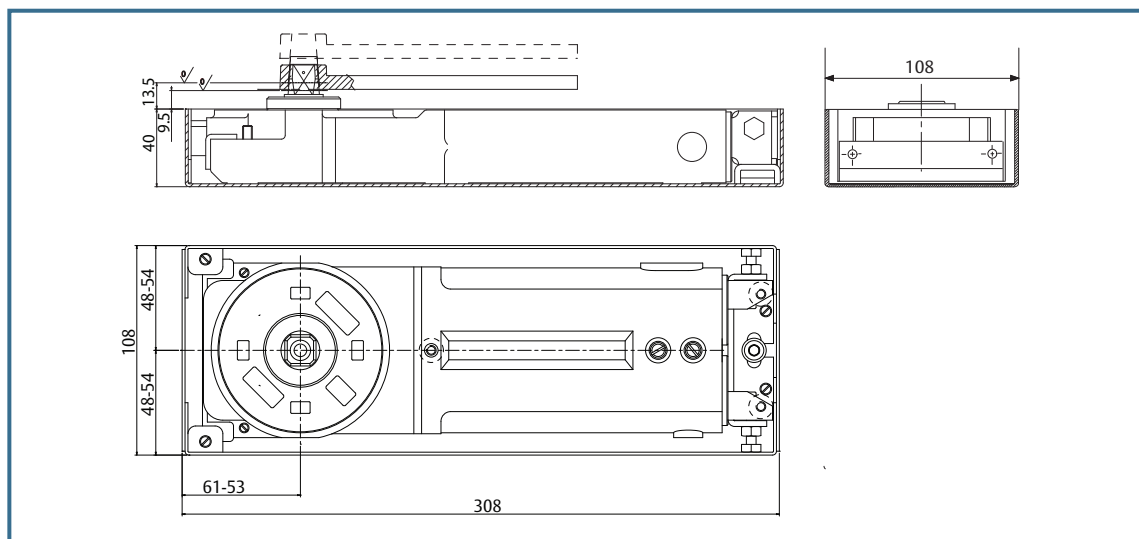
### SPECIFICA PER CAPITOLATI. CE

Chiudiporta a pavimento di basso spessore, forze EN 2-4, certificato EN 1154, regolazione verticale in cassetta, due valvole di velocità indipendenti, controllo di chiusura su ~130°, punto di rotazione variabile 53 - 61 mm, MAB 6000.

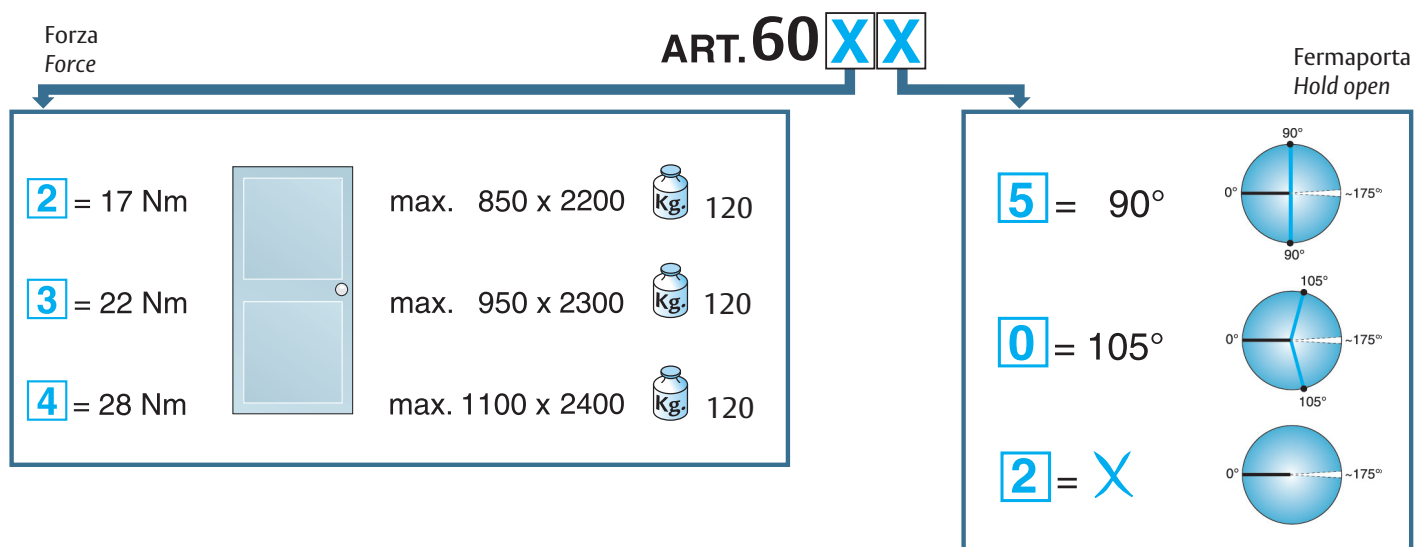
### SPECIFICATION. CE

Floor spring for thin slabs, forces EN 2-4, certified EN 1154, vertical adjustment within cement box, two independent speed valves, hydraulically controlled closing from ~ 130°, variable pivot point 53 - 61 mm., MAB 6000.

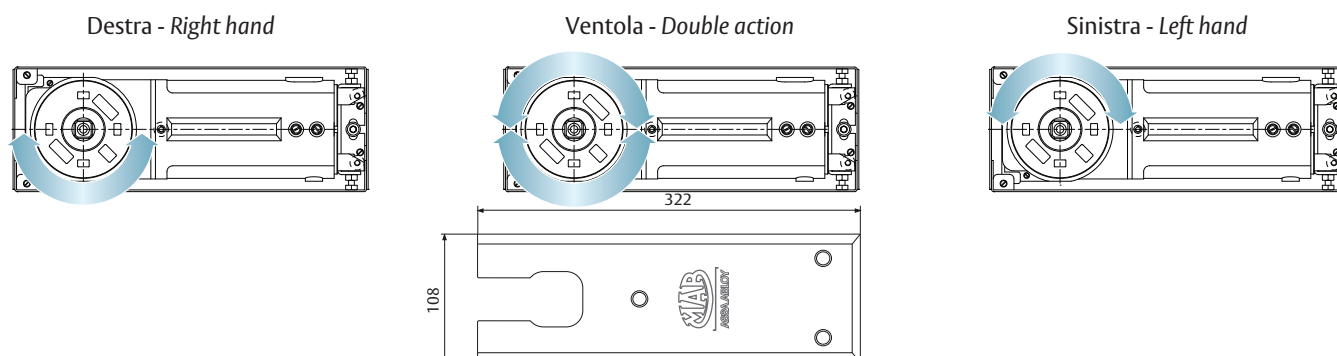




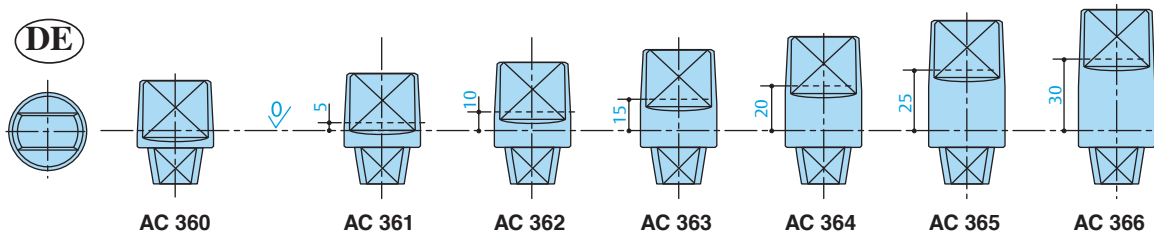
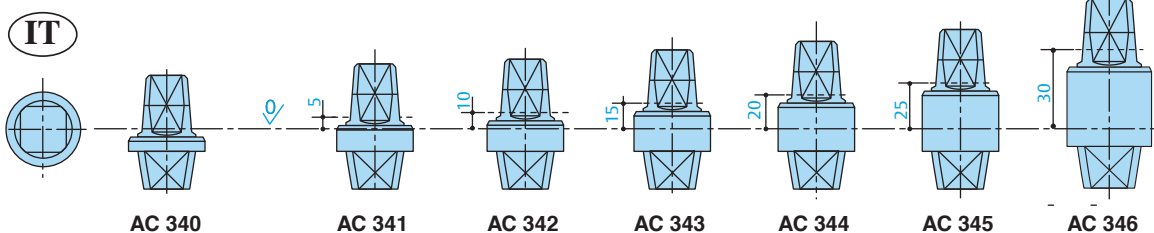
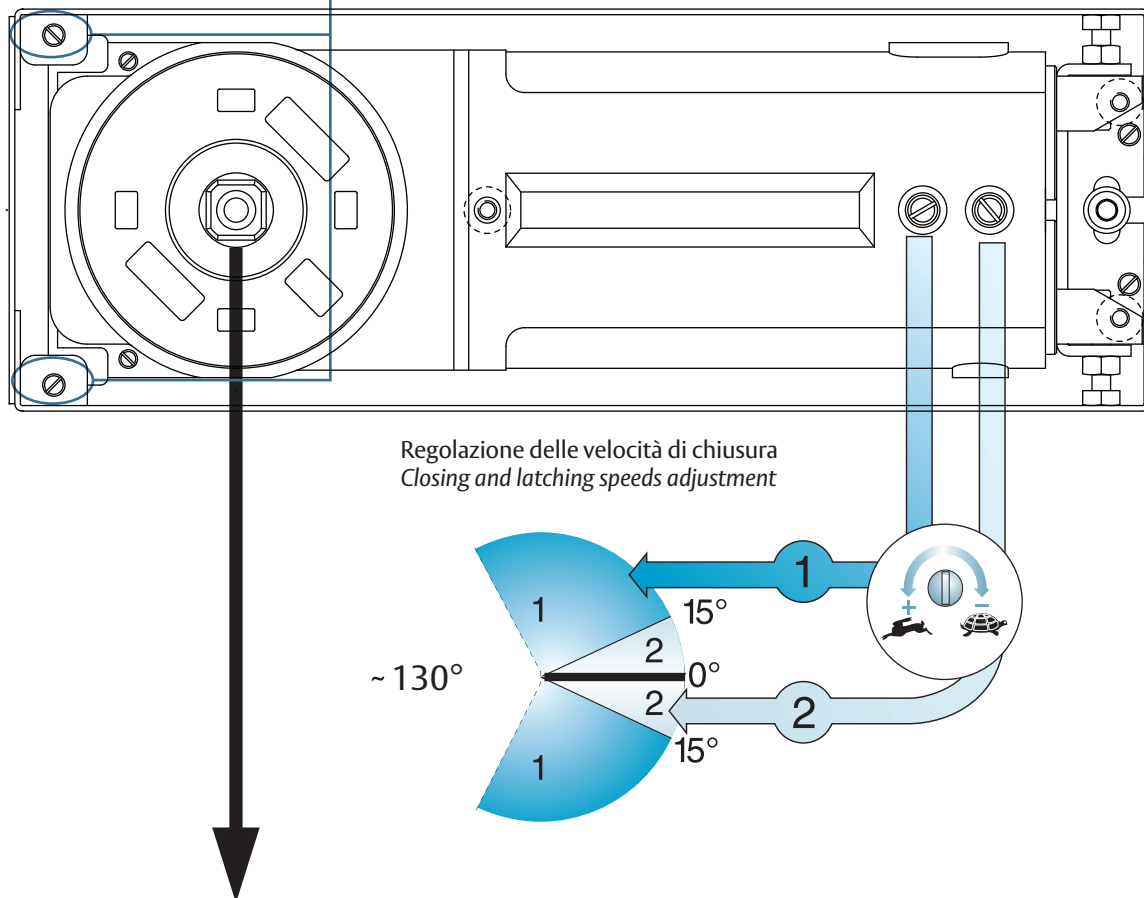
## Composizione del codice / Composition of article reference



## Montaggio universale / Universal mounting



# Bloccaggio verticale Vertical fixing

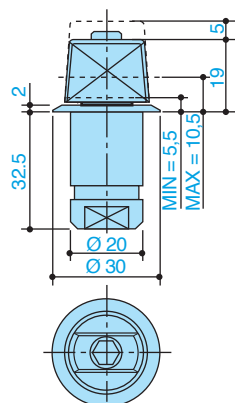


## Codice / Code

AC 299

Piletta a murare perno rettangolare tedesco.  
Floor idle pivot.  
Rectangular German spindle.

 max. 120

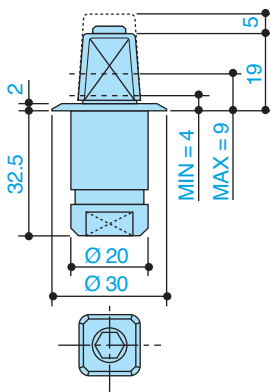


## Codice / Code

AC 246

Piletta a murare perno quadro italiano.  
Floor idle pivot.  
Square Italian spindle.

 max. 120

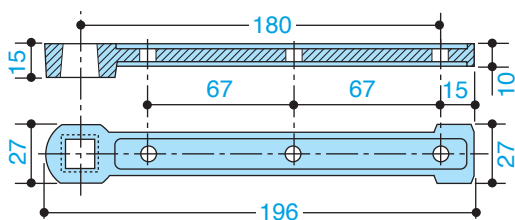


## Codice / Code

AC 213

Braccio inferiore in acciaio. Cava quadro italiano.  
Bottom arm in steel for double action doors.  
Square Italian spindle.

 max. 170

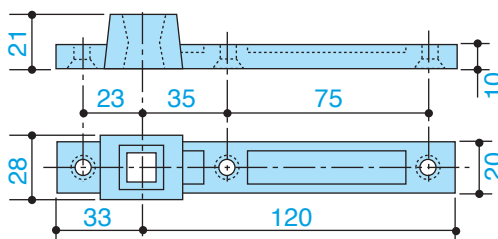


## Codice / Code

AC 115

Braccio inferiore reversibile in acciaio per porte a ventola. Cava quadro italiano.  
Reversible bottom arm in steel for double action doors.  
Square Italian spindle

 max. 300

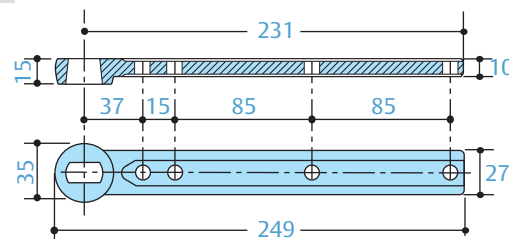


## Codice / Code

AC 298

Braccio inferiore in acciaio per porte a ventola.  
Cava rettangolare tedesca.  
Bottom arm in steel for double action doors.  
Rectangular German spindle.

 max. 300

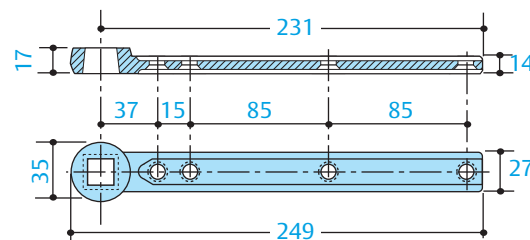


## Codice / Code

AC 297

Braccio inferiore in acciaio per porte a ventola.  
Cava quadro italiano.  
Bottom arm in steel for double action doors.  
Square Italian spindle.

 max. 300

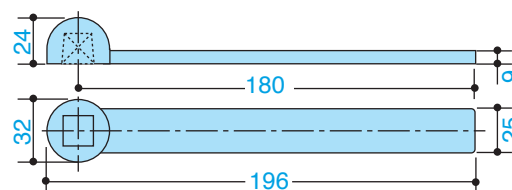


## Codice / Code

AC 2

Braccio inferiore in ottone per porte a ventola.  
Cava quadro italiano.  
Bottom arm in brass for double action doors.  
Square Italian spindle.

 max. 100

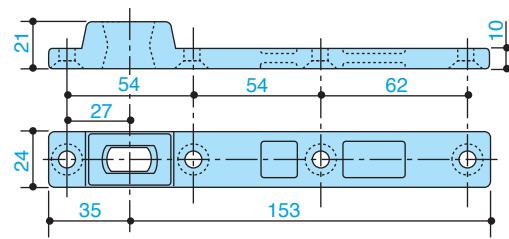


## Codice / Code

AC 393

Braccio inferiore reversibile in acciaio per porte a ventola. Cava rettangolare tedesca.  
Reversible bottom arm in steel for double action doors.  
Rectangular German spindle.

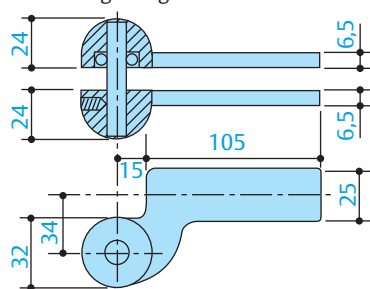
 max. 300





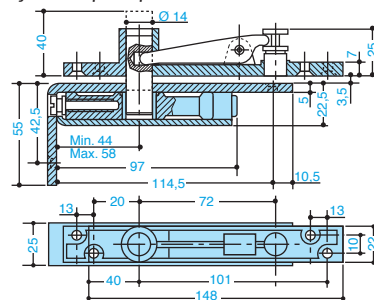
Perno superiore in ottone naturale con cuscinetto a sfere per porte destre o sinistre.  
Single acting top pivot in natural brass with ball bearing for right or left doors.

 Kg. max. 100

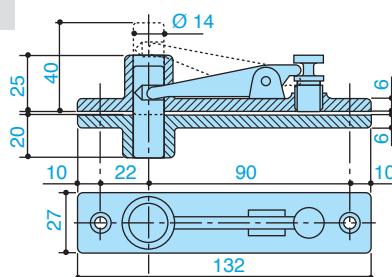


Perno superiore per porte a ventola. Punto di rotazione registrabile.  
*Double acting top pivot.*  
*Adjustable pivot point.*

 Kg. max. 170

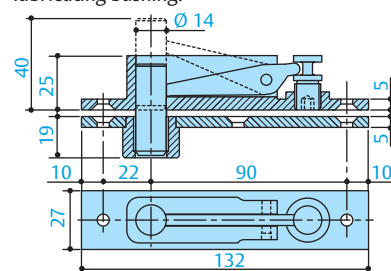


Perno superiore per  
porte a ventola.  
*Double acting top pivot.*

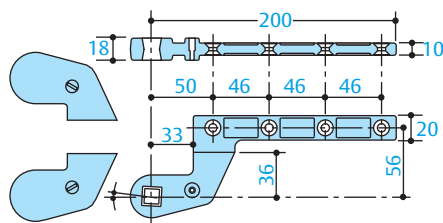
 max. 300

Perno superiore in acciaio massiccio per porte a ventola, con boccola autolubrificante.  
*Double acting top pivot in full steel with self lubricating bushing.*

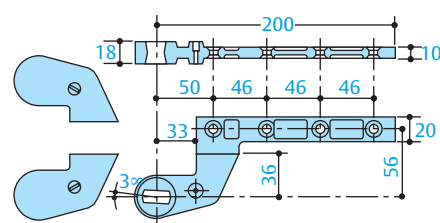
 max. 300



Braccio inferiore destro e sinistro in acciaio  
per porte a battente, interasse mm. 36.  
Cava quadro italiano.  
*Right and left bottom arm in steel for single  
acting doors, 36 mm. offset.  
Square Italian spindle.*

 max. 300

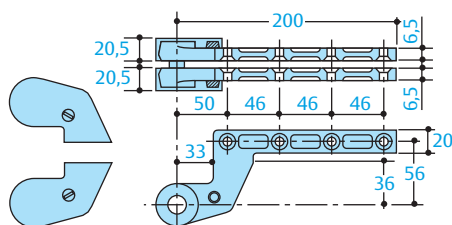
Braccio inferiore destro e sinistro in acciaio per porte a battente, interasse mm. 36. Cava rettangolare tedesca.  
Right and left bottom arm in steel for single acting doors, 36 mm. offset. Rectangular German socket.

 max. 300

Perno superiore in acciaio per porte a battente sinistre o destre, interasse mm. 36.  
*Top pivot in steel for left or right doors 36 mm. offset.*



max. 300

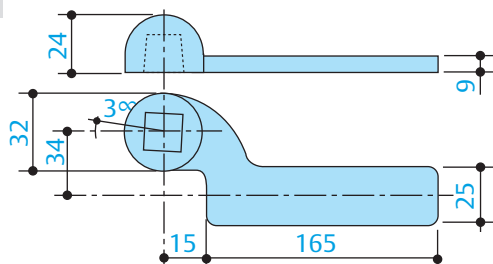


## Codice / Code

AC 3

Braccio inferiore sinistro in ottone naturale per porte a battente. Cava quadro italiano.  
Left bottom arm in natural brass for single acting doors. Square Italian spindle.

 max. 100

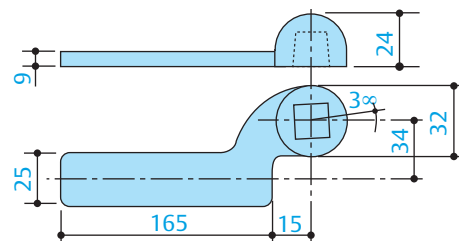


## Codice / Code

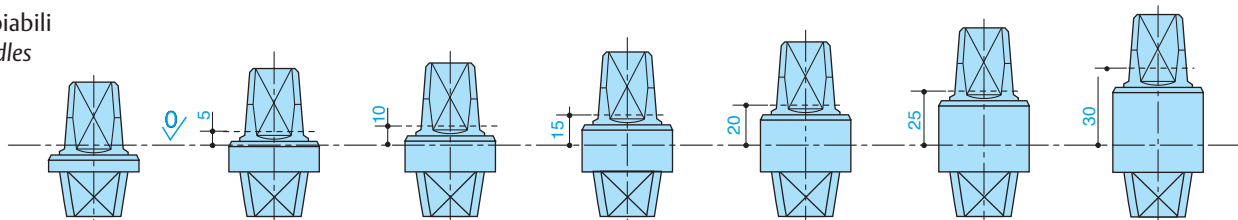
AC 1

Braccio inferiore destro in ottone naturale per porte a battente. Cava quadro italiano.  
Right bottom arm in natural brass for single acting doors. Square Italian spindle.

 max. 100



Perni intercambiabili  
Detachable spindles



Codice / Code	Codice / Code	Codice / Code	Codice / Code	Codice / Code	Codice / Code	Codice / Code
AC 340	AC 341	AC 342	AC 343	AC 344	AC 345	AC 346
AC 360	AC 361	AC 362	AC 363	AC 364	AC 365	AC 366



ASSA ABLOY Italia S.p.A.  
Via Bovaresa 13 - 40017 San Giovanni in Persiceto (BO) Italy  
Tel. +39 051 6812411 - Fax +39 051 827486  
[info@assaabloy.it](mailto:info@assaabloy.it) - [www.assaabloy.it](http://www.assaabloy.it)

ASSA ABLOY is the global leader in door opening solutions, dedicated to satisfying end-user needs for security, safety and convenience.

[www.assaabloy.com](http://www.assaabloy.com)

