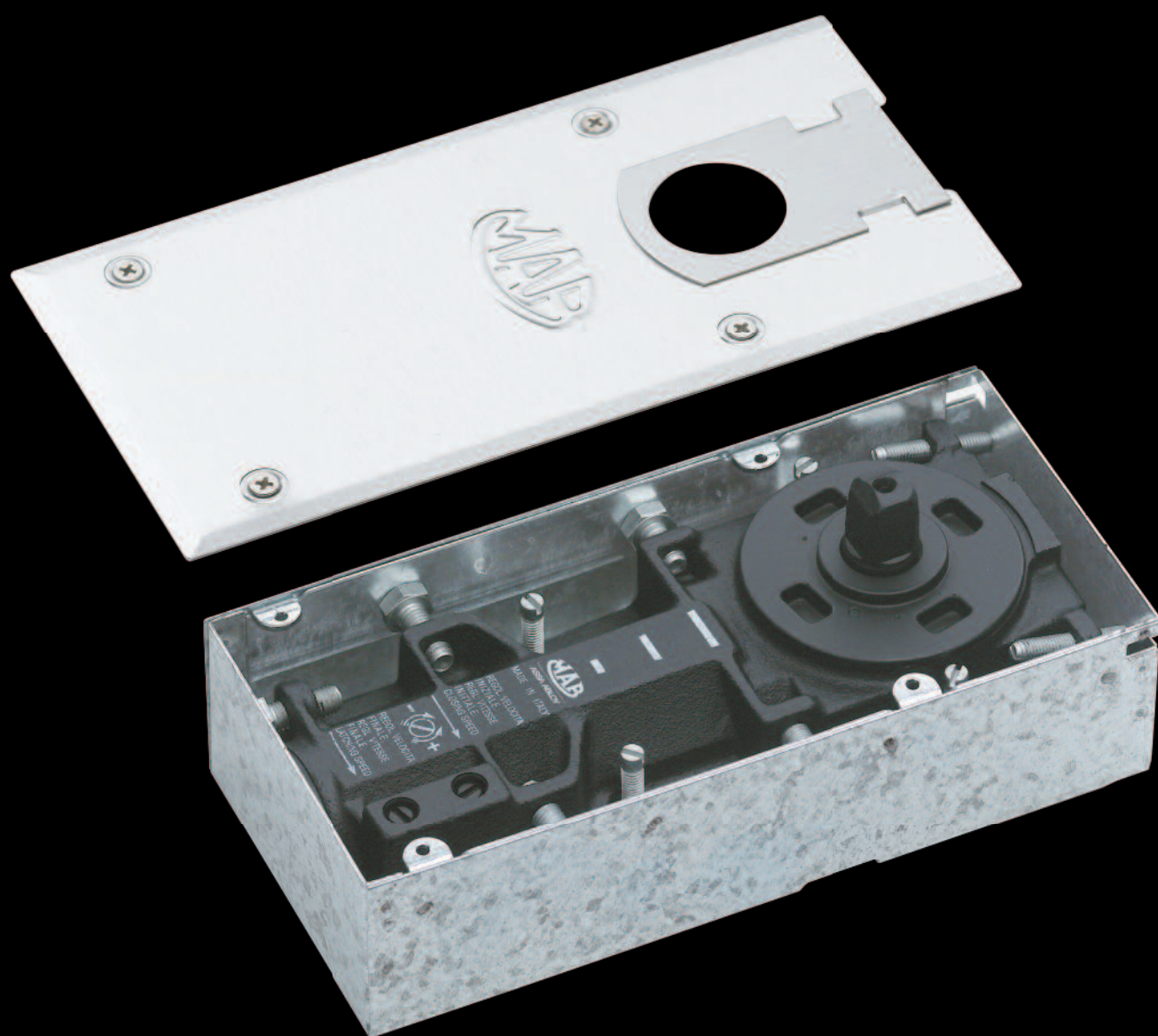


# Serie 7100

## 7100 Series



ASSA ABLOY, the global leader  
in door opening solutions



# Chiudiporta a pavimento compatto

## Compact floor spring

### Caratteristiche tecniche:

- Unica dimensione di corpo per tre forze di chiusura EN 1 - 2 - 3.
- Universale per porte destre, sinistre e a ventola.
- Adatto per porte in legno, metallo, vetro.
- Adatto per interni commerciali e residenziali grazie alle dimensioni compatte e al basso sforzo di apertura, ideale per bambini, anziani e disabili.
- Regolazione in tutti i sensi per risolvere facilmente problemi di complanarità del pavimento senza necessità di smontare la porta.
- Ampia regolazione verticale per eliminare ogni attrito al suolo senza necessità di prolunghe del perno.
- Apertura consentita fino a 180° nei due sensi con richiamo idraulico da circa 135°. Rotazione libera da 135° a 180°. Fermaporta a 90°, 105° o in ogni angolo tra 135° e 180°.
- Velocità di chiusura controllata da due valvole indipendenti non critiche di facile regolazione.
- Chiusura dolce o con potente scatto finale regolato da valvola per assicurare il tipo di chiusura più adatto.
- Ampia gamma di finiture della piastra di copertura: inox lucido, inox satinato, ottone lucido.
- Disponibile con perno italiano (standard) o francese.

### Specifica per capitolati

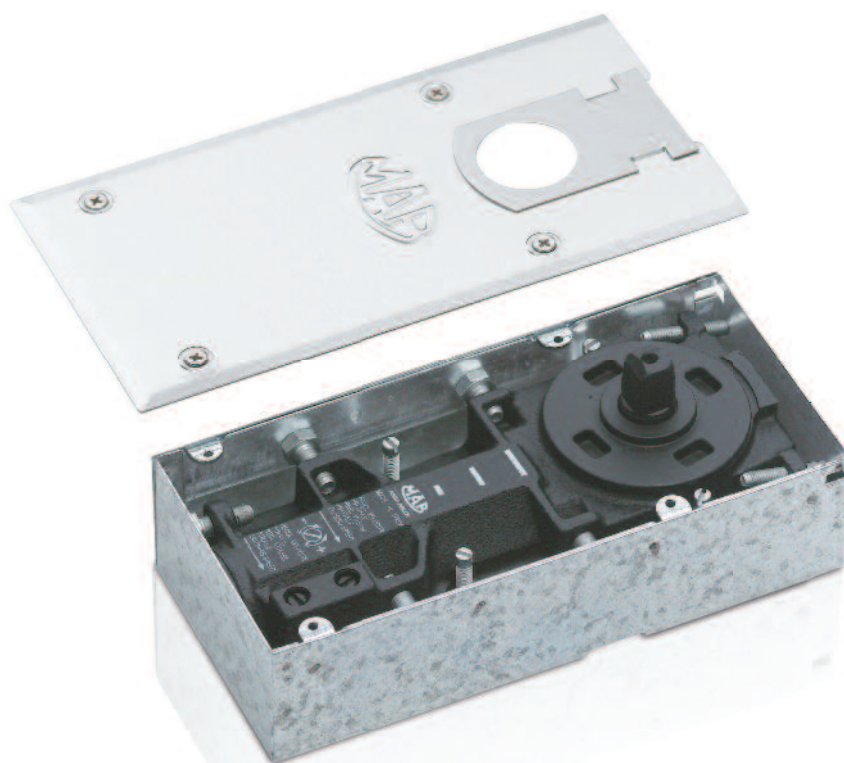
Chiudiporta a pavimento compatto forze EN 1-2-3, con apertura a 180° nei due sensi, MAB serie 7100.

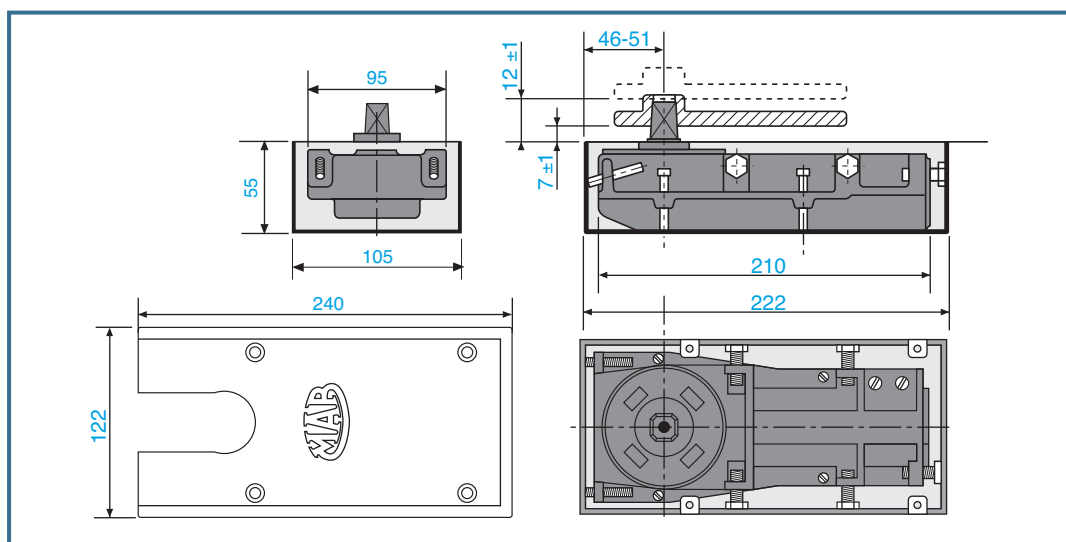
### Features:

- One body size for three closing force sizes EN 1 - 2 - 3.
- Universal for right, left or double action doors.
- Suitable for timber, metal and glass doors.
- Ideal for commercial and residential interiors thanks to its compact size and its low opening force (required by children, elderly and disabled users).
- Adjustment in all directions to solve floor level problems without taking down the door.
- Wide range of vertical adjustment to solve problems of undue door friction without need of additional spindle extensions.
- Opening up to 180° in both swings with hydraulic control from approx 135°. Free rotation from 135° to 180°. Hold open at 90°, 105° or any angle between 135° and 180°.
- Closing speed controlled by two easily adjustable independent non critical valves.
- Soft closing or powerful latching action to ensure proper closing also in case of hard-to-latch locks.
- Architectural finishes: coverplates in polished stainless steel, satin stainless steel, polished brass.
- Available with Italian spindle (standard) or French spindle.

### Specifications

Compact floor spring forces EN 1-2-3 with opening to 180° in both swings, MAB 7100 series.



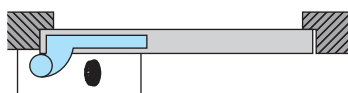


## Montaggio universale Universal mounting

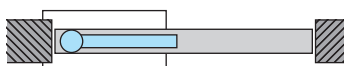
Lo stesso chiudiporta può essere installato su porte destre, sinistre o a ventola, con il solo cambio degli accessori.

All models are suitable for right, left or double acting doors by just changing the accessories.

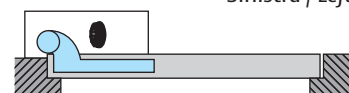
Destra / Right



A ventola / Double action



Sinistra / Left



## Controllo di chiusura Closing control

La valvola 1 regola la velocità di chiusura da 135° a 15° circa.

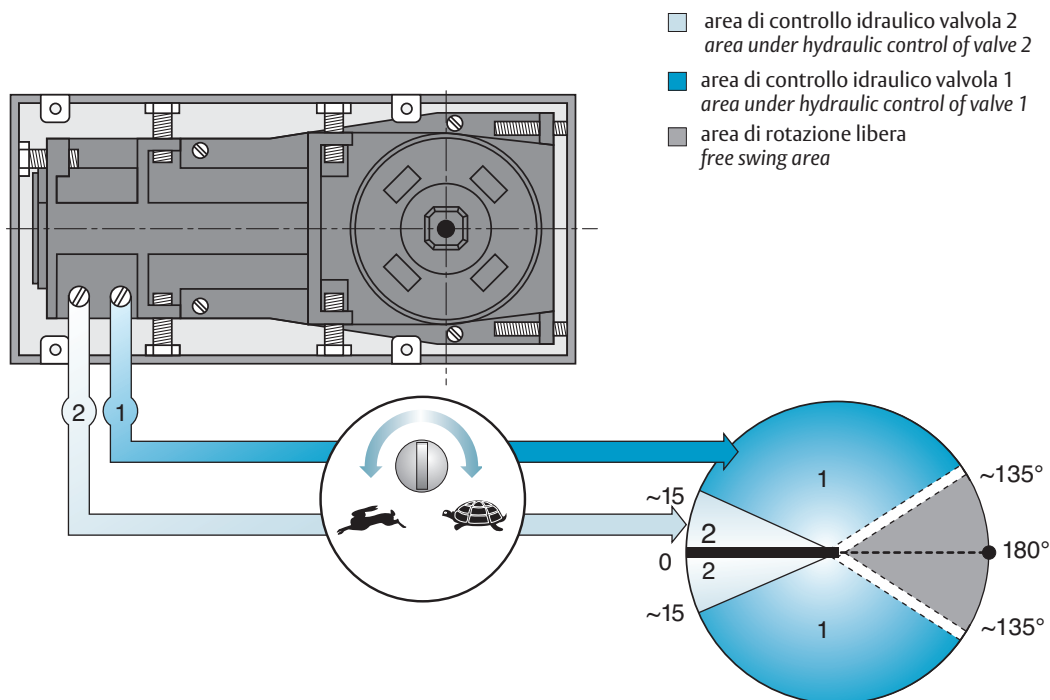
La valvola 2 regola la velocità di chiusura da 15° a 0°.

Nell'area di rotazione libera, la porta rimane nella posizione in cui si lascia ed è insensibile alla regolazione delle valvole.

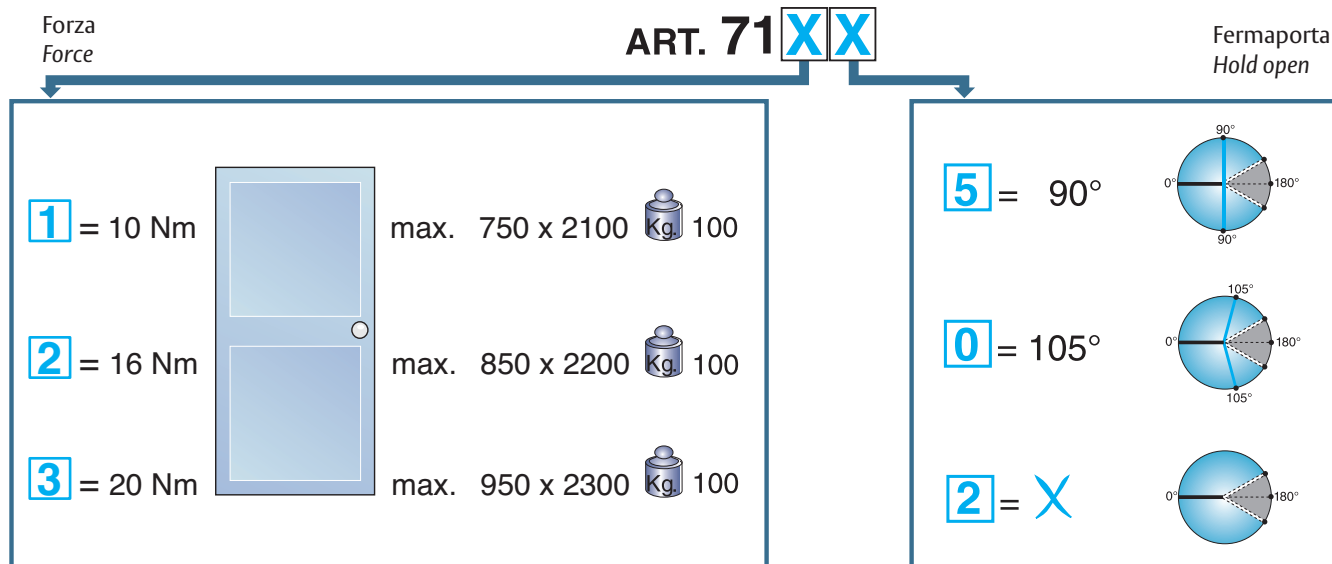
Valve 1 adjusts the closing speed from 135° to 15° approx.

Valve 2 adjusts the closing speed from 15° to 0°.

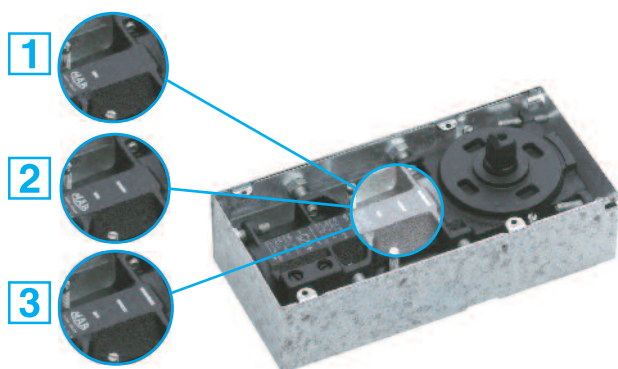
In the free rotation area, the door stands wherever it is released and is totally insensitive to valves adjustments.



# Composizione del codice Composition of article reference

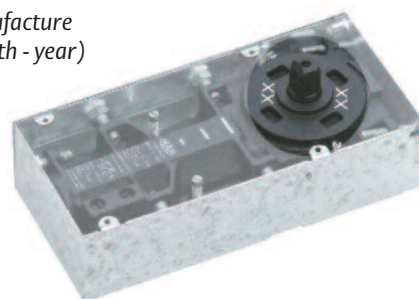


## Identificazione della forza Force size identification



Data di produzione  
MM-AA (mese - anno)

Date of manufacture  
MM-YY (month - year)

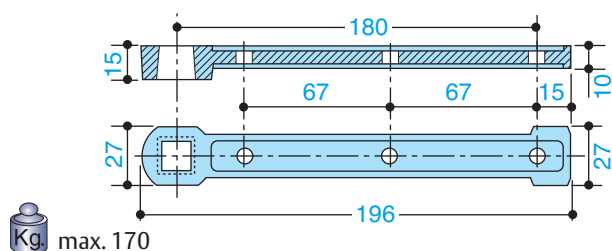


## Accessori Accessories

Codice / Code

AC 213

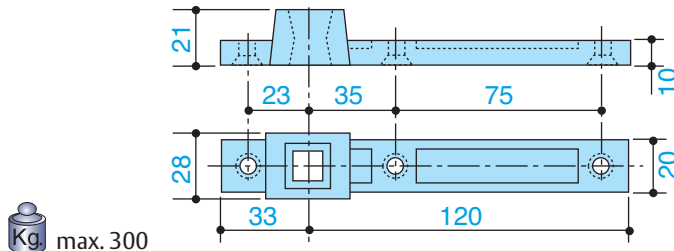
Braccio inferiore in acciaio.  
Cava quadro italiano.  
Bottom arm in steel for double action doors.  
Square Italian spindle.



Codice / Code

AC 115

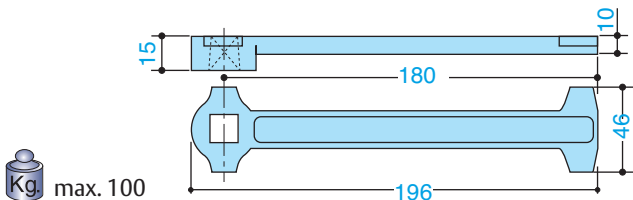
Braccio inferiore reversibile in acciaio per porte a ventola. Cava quadro italiano  
Reversible bottom arm in steel for double action doors. Square Italian spindle



## Codice / Code

Braccio inferiore in acciaio per porte a ventola.  
Cava quadro italiano.  
*Bottom arm in steel for double action doors.  
Square Italian spindle.*

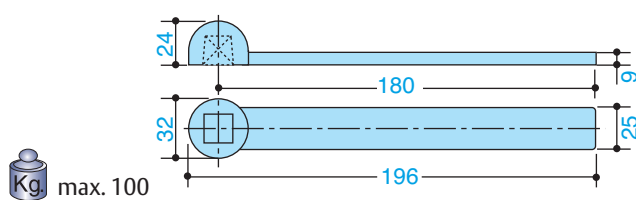
AC 50



## Codice / Code

Braccio inferiore in ottone per porte a ventola.  
Cava quadro italiano.  
*Bottom arm in brass for double action doors.  
Square Italian spindle.*

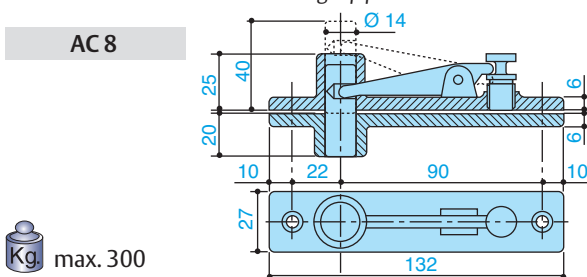
AC 2



## Codice / Code

Perno superiore per  
porte a ventola.  
*Double acting top pivot.*

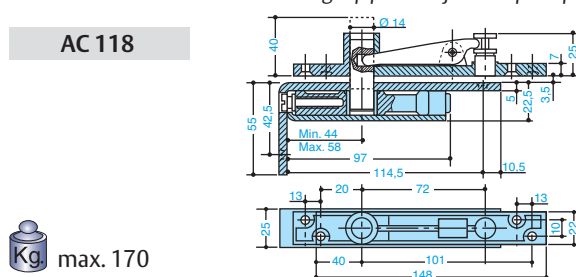
AC 8



## Codice / Code

Perno superiore per porte a ventola.  
Punto di rotazione registrabile.  
*Double acting top pivot. Adjustable pivot point.*

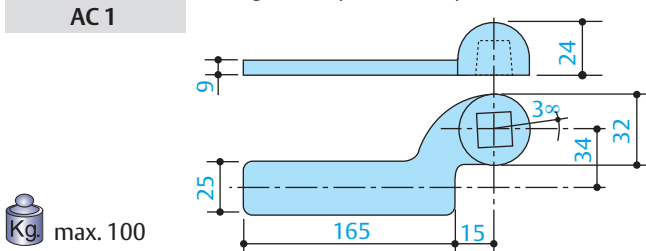
AC 118



## Codice / Code

Braccio inferiore destro in ottone naturale  
per porte a battente. Cava quadro italiano.  
*Right bottom arm in natural brass for single  
acting doors. Square Italian spindle.*

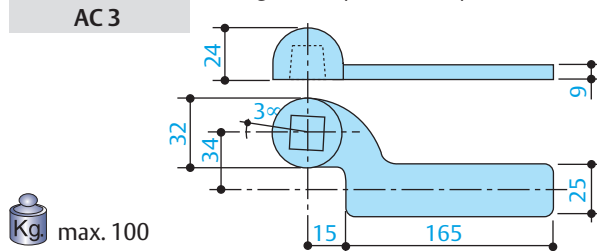
AC 1



## Codice / Code

Braccio inferiore sinistro in ottone naturale  
per porte a battente. Cava quadro italiano.  
*Left bottom arm in natural brass for single  
acting doors. Square Italian spindle.*

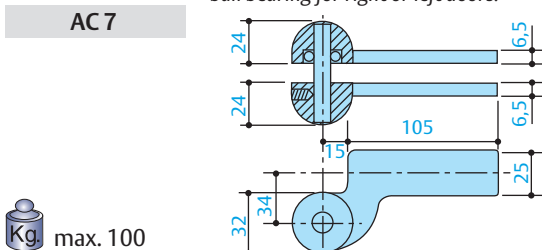
AC 3



## Codice / Code

Perno superiore in ottone naturale con cuscinetto  
a sfere per porte destre o sinistre.  
*Single acting top pivot in natural brass with  
ball bearing for right or left doors.*

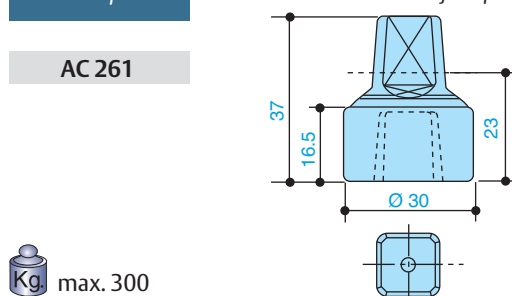
AC 7



## Codice / Code

Prolunga + 23 mm in acciaio per quadro italiano.  
*Extension +23 mm in steel for square Italian spindle.*

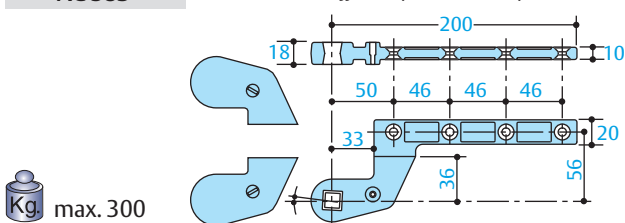
AC 261



## Codice / Code

Braccio inferiore destro e sinistro in acciaio per  
porte a battente, interasse mm 36.  
Cava quadro italiano.  
*Right and left bottom arm in steel for single acting  
doors, 36 mm offset. Square Italian spindle.*

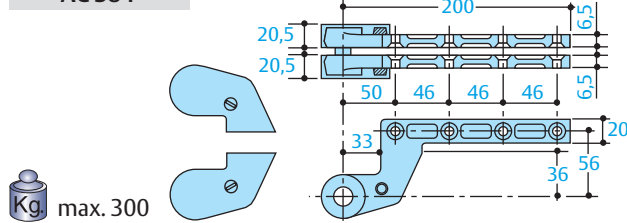
AC 583



## Codice / Code

Perno superiore in acciaio per porte a battente  
sinistre o destre, interasse mm 36.  
*Top pivot in steel for left  
or right doors 36 mm offset.*

AC 384







ASSA ABLOY Italia S.p.A.  
 Via Bovaresa 13/15 - 40017 San Giovanni in Persiceto (BO) Italy  
 Tel. +39 051 6812411 - Fax +39 051 827486  
[info@assaabloy.it](mailto:info@assaabloy.it) - [www.assaabloy.it](http://www.assaabloy.it)

ASSA ABLOY Italia S.p.A. si riserva di apportare in qualunque momento e senza preavviso le modifiche necessarie per migliorare e evolvere le caratteristiche dei propri prodotti. Fotografie, illustrazioni e descrizioni sono da ritenersi indicative.  
 ASSA ABLOY Italia S.p.A. reserves the right at any time and without notice, the necessary modifications in order to improve and evolve the characteristics of their products. Photographs, illustrations and descriptions ought to be considered as indicative.

H001E11 / 04-2011

ASSA ABLOY is the  
 global leader in door  
 opening solutions,  
 dedicated to satisfying  
 end-user needs for  
 security, safety and  
 convenience.



[www.assaabloy.com](http://www.assaabloy.com)