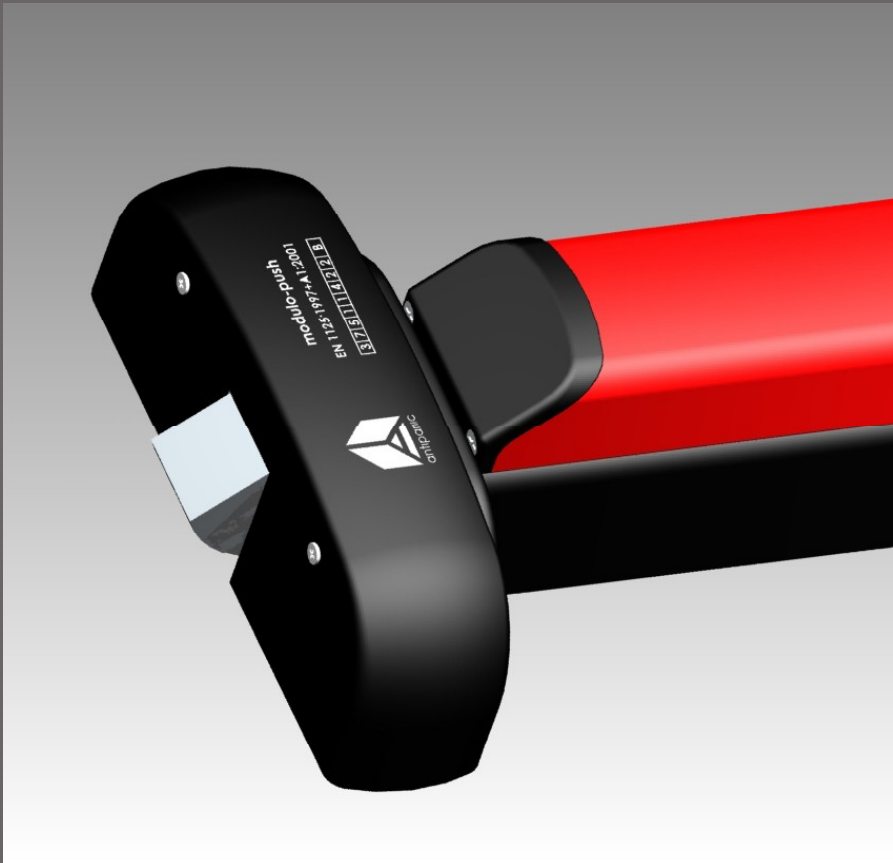


# push-bar

- meccanico
- elettrico (1 punto di chiusura)
- **motorizzato (3 punti di chiusura)**



# modulo-push bar



## REVERSIBILE COMPONIBILE

Scrocchi in acciaio  
Cuffie in acciaio verniciato  
Carter e barra in alluminio

## TOUCH-BAR REVERSIBLE - MODULAR

Steel latch bolts  
Black painted steel covers

## PUSH-BAR RÉVERSIBLE MODULAIRE









Pênes dormants en acier  
Caches en acier laqué noir

## ASTE VERTICALI E COMANDI ESTERNI UGUALI A QUELLI DEL "MODULO-TONDO"

## VERTICAL RODS AND OUTSIDE TRIMS SAME AS "MODULO-TONDO"

## TRINGLES VERTICALES ET MODULE EXTERIEUR MÊMES QUE "MODULO-TONDO"

confezione - boxing : 1 pz.

Cod. Art.	Lunghezza Lenght	Descrizione Description	Colori - Colours	
			Cod. NR	
601/1/...	840	1 punto di chiusura 1 locking point 1 point de fermeture	Cod. NV	 Nero/rosso - Black/red - Noire/rouge RAL 9005/3020
601/2/...	1170		Cod. NN	 Nero/verde - Black/green - Noire/vert RAL 9005/6029
601/3/...	1300		Cod. GG	 Nero/nero - Black/black - Noire/noire RAL 9005/9005
602/1/...	840	2 punti di chiusura 2 locking points 2 point de fermeture	Cod. GG6	 Grigio/grigio - Grey/Grey - Gris/Gris RAL 7040/7040 oppure - or -ou
602/2/...	1170		Cod. BB	 Bianco/bianco - White/White - Blanc/Blanc RAL 9010/9010
602/3/...	1300		Cod. NS	 Nero/Silver - Black/Silver - Noire/argent RAL 9005/all. anodizzato - anodized alum.
603/1/...	840	3 punti di chiusura 3 locking points 3 point de fermeture	Cod. AA	 Effetto acciaio - steel finish special painting Laquage spécial finition acier
603/2/...	1170		Cod. XX	 Cromo satinato - Satiny chrome Chrome satinée
603/3/...	1300			Solo per - only for - seulement pour Art. 603/2/XX(mm. 1170) e Art. 603/3/XX (mm. 1300)

Classificazione secondo la  
NUOVA Norma EN 1125:2008

3 - 7 - 7 - B - 1 - 4 - 2 - 2 - B - A

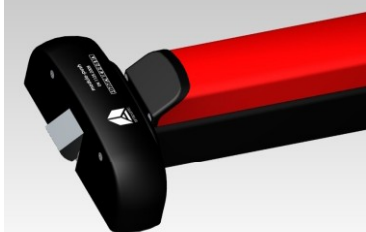
disponibile anche con FERMO A GIORNO.  
Aggiungere FG al codice  
available with DOGGING MECHANISM.  
Add FG code to the part number  
Disponible avec MÉCANISME DE DOGGING.  
Ajouter le code FG

Finitura a richiesta - Finition on request - Finition on demande:  
O = Ottonato - Brass finisced - Finition laiton  
Solo per - only for - seulement pour:  
Art. 603/2/OO(mm. 1170) e Art. 603/3/OO (mm. 1300)

### Specifiche di capitolato

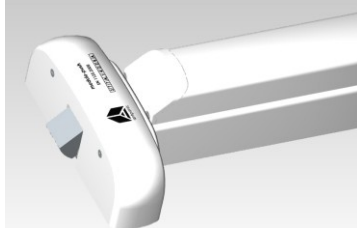
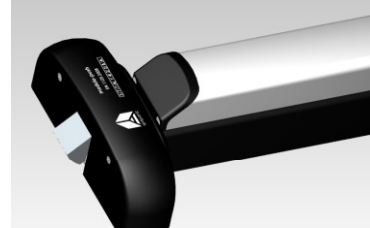
Maniglione antipanic "modulo-push bar Serie 600"

Maniglione antipanic, reversibile a 1-2 e 3 punti di chiusura. Con meccanismo interno a cremagliera.

**Nero-Rosso**

**Nero-Verde**

**Nero-Nero**

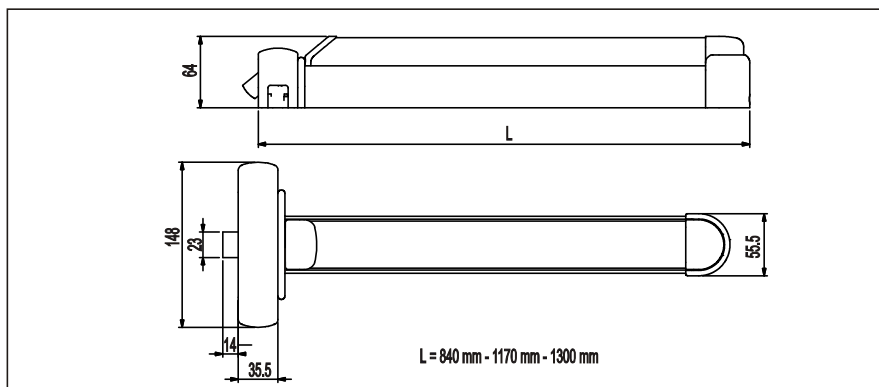
**Grigio-Grigio**

**Bianco-Bianco**

**Nero-Silver**


Cod. Art.	Lunghezza Lenght	Descrizione - Description
603/1/AA	840	3 punti di chiusura 3 locking point 3 point de fermeture
603/2/AA	1170	Effetto acciaio Steel finish special painting Laquage spécial finition acier
603/3/AA	1300	

**Acciaio-Acciaio**


Cod. Art.	Lunghezza Lenght	Descrizione - Description
603/2/XX	1170	3 punti di chiusura 3 locking point 3 point de fermeture
603/3/XX	1300	Cromo satinato - Satiny chrome Chrome satinée



Per aste/scrocchi e gruppo cilindro  
maniglia vedere alle pagg. 66 - 67 - 68

For rods/latch bolts, cylinders and  
handle, see pages 66 - 67 - 68

Pour tringles/pênes dormants,  
cylindres et poignée, voir  
pages 66 - 67 - 68