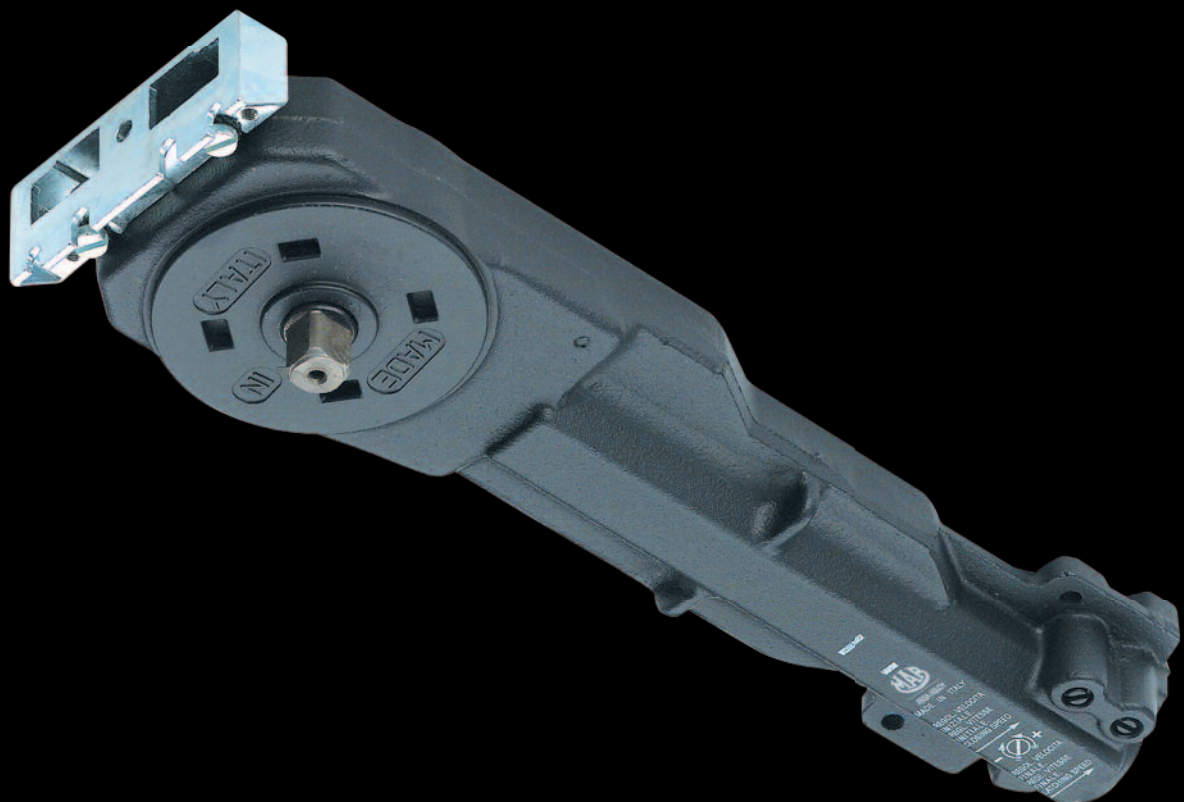


# Chiudiporta nascosto 5600

## *Concealed door closer 5600*



ASSA ABLOY, the global leader  
in door opening solutions



# Chiudiporta nascosto nell'architrave *Overhead concealed door closer*



## Caratteristiche tecniche:

- Corpo in ghisa stabilizzata.
- Meccanismo ad alta efficienza in acciaio temprato.
- A bassa coppia d'apertura.
- Due velocità di chiusura controllate da valvole indipendenti.
- Potente scatto finale totalmente modulabile.
- Unica dimensione di corpo per le varie forze.
- Disponibile nelle forze di chiusura 1 - 2 - 3 EN / ANSI.
- Totalmente intercambiabile con MAB 5750.
- Disponibile con fermaporta a 90°, 105° e senza fermaporta.
- Perno standard di altezza mm 21.
- A richiesta mm16.

## Caratteristiche specifiche:

L'alta efficienza (min. 70%) e la particolare concezione del meccanismo, permettono l'apertura delle porte con una spinta di basso valore e costante da 0° a 90°. Eliminando incrementi di forza necessaria all'apertura fino a 90°, rende le porte più adatte ai disabili in conformità con le norme ADA (USA) per porte interne ed esterne.

**Forza 1** (per porte interne): spinta max. in apertura fino a 90° inferiore a 17 Nm

**Forza 2** (per porte esterne): spinta max. in apertura fino a 90° inferiore a 29 Nm

## Specifica per capitoli

Chiudiporta nascosto nell'architrave, forze EN 1-3, a bassa coppia d'apertura, MAB 5600.

## Features:

- High grade cast iron body.
- High efficiency hardened steel mechanism.
- Low opening force.
- Two independent, non-critical closing speed valves.
- Fully adjustable final latch.
- One body size.
- Power sizes 1 - 2 - 3 according to EN / ANSI.
- Totally interchangeable with MAB 5750.
- Available with hold open at 90°, 105° or non hold open.
- Standard spindle height mm 21.
- Optional mm16.

## Specific features:

The high efficiency (min. 70%) and the particular design of the mechanism enable the door to be opened with low and constant effort from 0° through 90° in compliance with ADA (USA) requirements for interior and exterior doors.

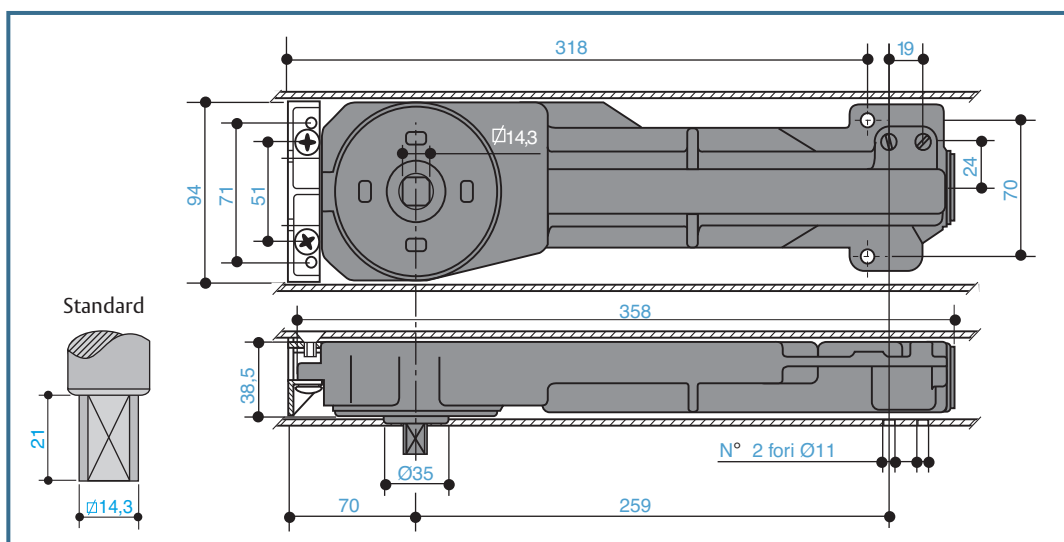
**Power size 1** (for interior doors): max opening force through 90° less than 17 Nm.

**Power size 2** (for exterior doors): max opening force through 90° less than 29 Nm.

## Specifications

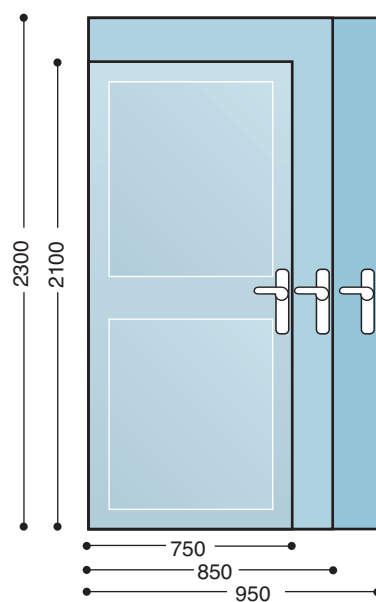
Overhead concealed closer for centre hung doors, power sizes EN 1-3, with low opening force, ADA compliant, MAB 5600.





## Forze di chiusura

- 5610 :  
Forza 1 = 11 Nm.  
Per porte max. mm.750 x 2100
  - 5620 :  
Forza 2 = 16 Nm.  
Per porte max. mm.850 x 2200
  - 5630 :  
Forza 3 = 22 Nm.  
Per porte max. mm.950 x 2300
- 5610 :  
Size 1 = 11 Nm.  
For doors max. mm.750 x 2100
  - 5620 :  
Size 2 = 16 Nm.  
For doors max. mm.850 x 2200
  - 5630 :  
Size 3 = 22 Nm.  
For doors max. mm.950 x 2300



## Regolazione velocità di chiusura e scatto finale

### *Adjustment of speed and final latch*

L'uso di un olio termostabile rende episodica la necessità di regolazione.

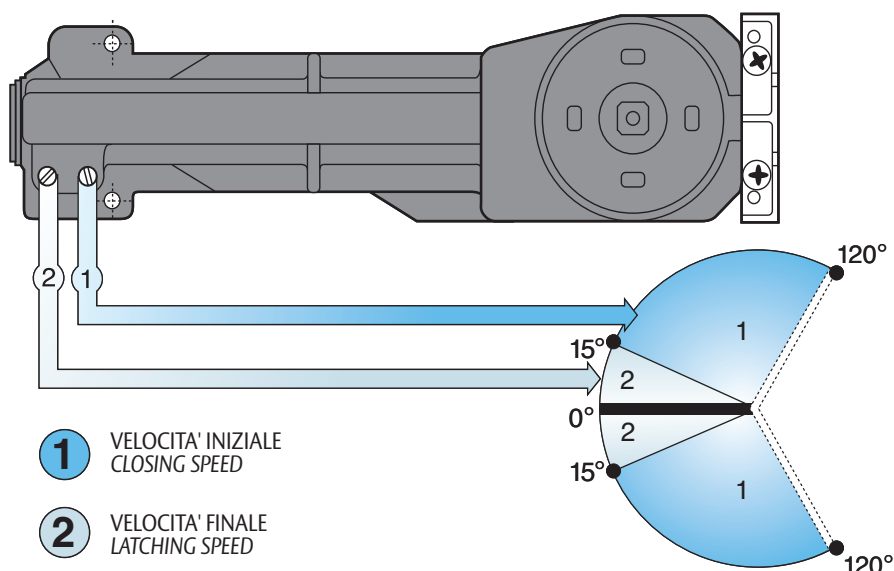
Valvola 1:  
regola la velocità di chiusura da 120° a 15°circa.

Valvola 2 :  
regola la velocità di chiusura da 15° a 0°.

*The use of a special formula hydraulic fluid makes speed adjustments rarely needed.*

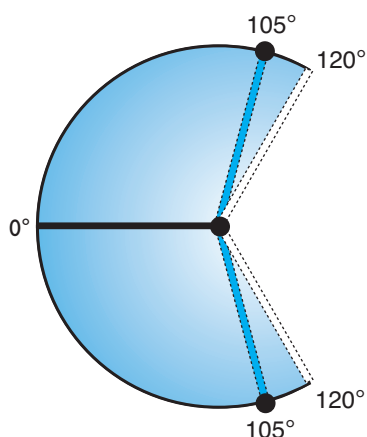
Valve 1:  
controls closing speed from 120° to approx. 15°.

Valve 2:  
controls latching speed from 15° to 0°.



# Tipo di controllo

## Type of control



L'ultimo carattere del codice articolo (0,2,5) identifica il tipo di controllo:

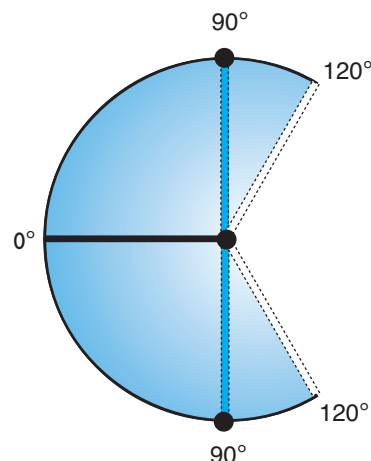
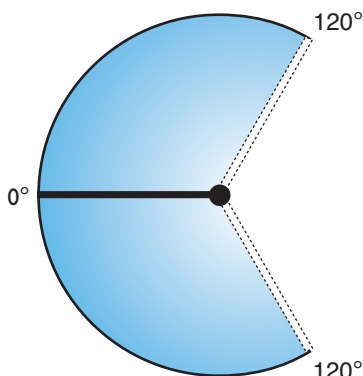
0 = fermaporta a 105° apertura max. 120°

2 = senza fermaporta apertura max. 120°

5 = fermaporta a 90° apertura max. 120°

N.B.

Per evitare danni causati da forzature, si raccomanda la posa di un fermo sul pavimento prima del fine corsa del chiudiporta.



The last digit of article reference (0,2,5) identifies the type of control:

0 = hold open at 105° max. opening 120°

2 = without hold open max. opening 120°

5 = hold open 90° max. opening 120°

NOTE

To avoid damages caused by accidental openings, a stop on the floor before the max. opening allowed is recommended.

## Identificazione dell'articolo

### How to order

ART. 56 **XX** **H** **XX**

1 = Forza 1

2 = Forza 2

3 = Forza 3

0 = fermaporta 105°

2 = senza fermaporta

5 = fermaporta 90°

21 = perno standard altezza mm. 21 (\*)

16 = perno opzionale altezza mm. 16 (\*\*)

(\*) Raccomandato per uso con cerniera superiore V535.

(\*\*) In mancanza di specifica, viene attribuita l'altezza standard.

1 = Power Size 1

2 = Power Size 2

3 = Power Size 3

0 = hold open at 105°

2 = without hold open

5 = hold open at 90°.

21 = standard spindle 21 mm. high (\*)

16 = optional spindle 16 mm. high (\*\*)

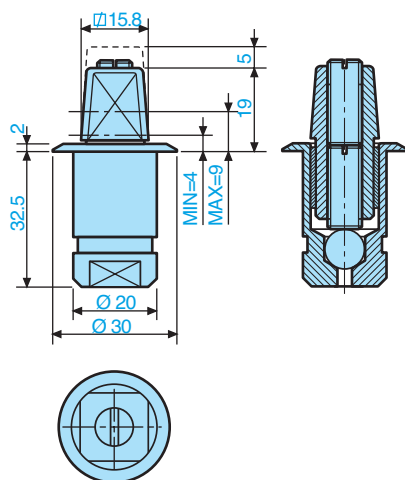
(\*) Recommended for use with top hinge V535.

(\*\*) By default, the standard height is assigned.

## Codice / Code

**AC 246**

Piletta a murare regolabile,  
perno quadro italiano.  
Adjustable floor pivot, square  
Italian spindle.

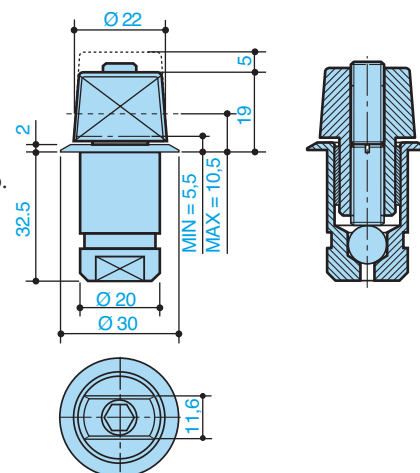


max. 120

## Codice / Code

**AC 299**

Piletta a murare regolabile,  
perno rettangolare tedesco.  
Adjustable floor pivot,  
rectangular German spindle.

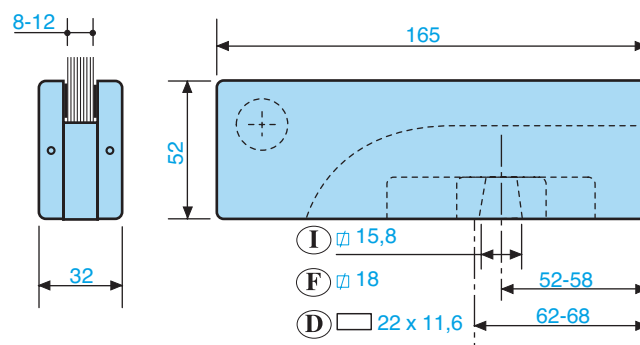
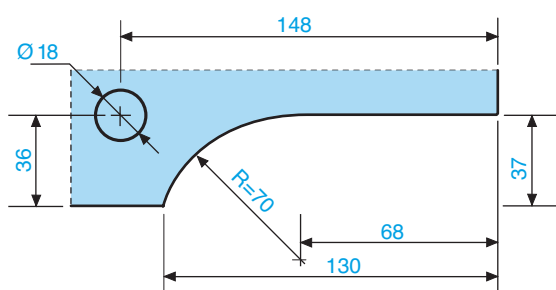


max. 120

## Codice / Code

Cerniera inferiore regolabile.  
Adjustable bottom hinge.

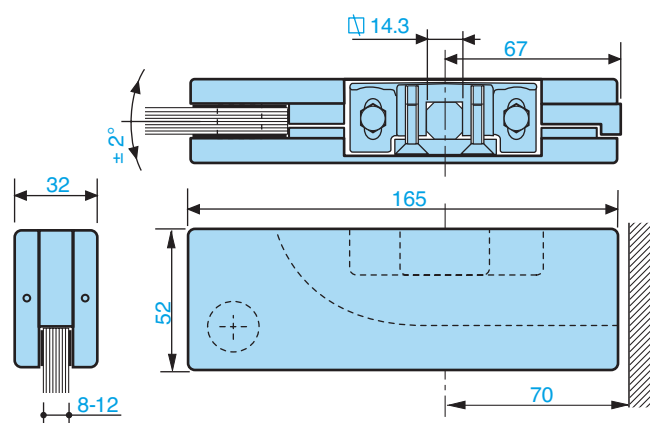
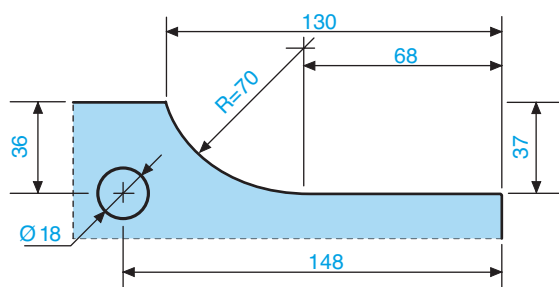
**V 500**



## Codice / Code

Cerniera superiore con  
regolazione angolare.  
Top hinge with angular adjustment

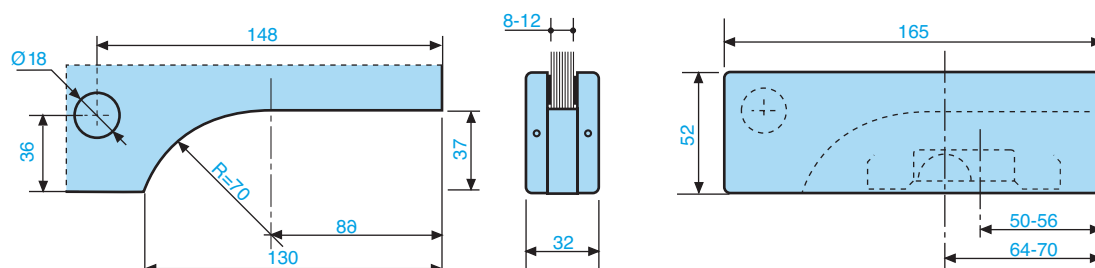
**V 535**



## Codice / Code

Cerniera inferiore per  
perno semisferico V 311.  
*Bottom hinge for dome floor pivot V 311.*

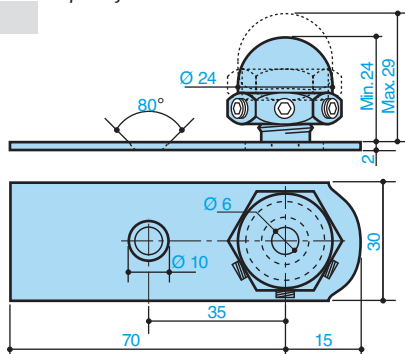
V 536



## Codice / Code

Perno semisferico  
regolabile per V 536.  
*Adjustable dome floor  
pivot for V 536.*

AC 311

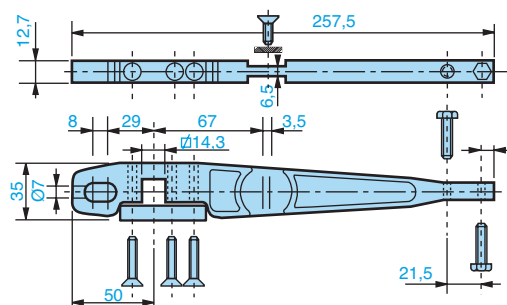


max. 100

## Codice / Code

Braccio per montaggio laterale.  
*Side load top arm.*

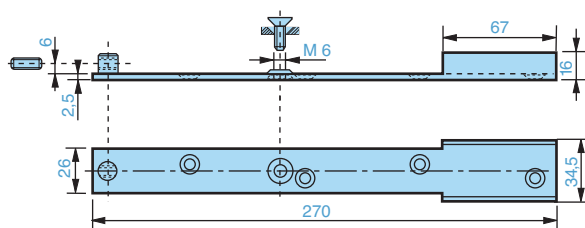
AC 48



## Codice / Code

Piastra di rinforzo per AC 48 e per AC 98.  
*Reinforce plate for AC 48 and for AC 98.*

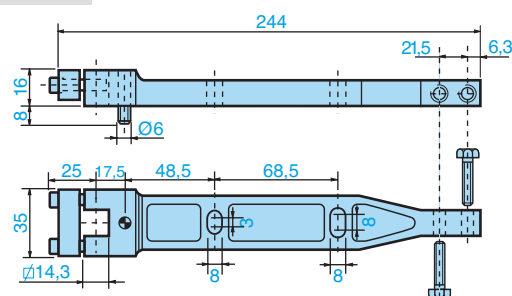
AC 140



## Codice / Code

Braccio per montaggio posteriore.  
*Back load top arm.*

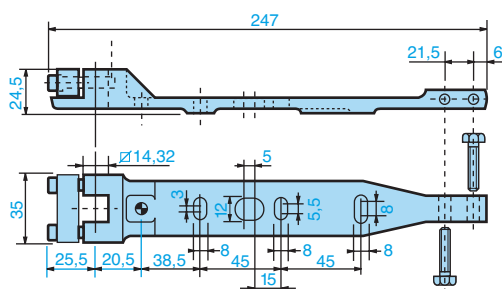
AC 98



## Codice / Code

Braccio per montaggio posteriore.  
Back load top arm.

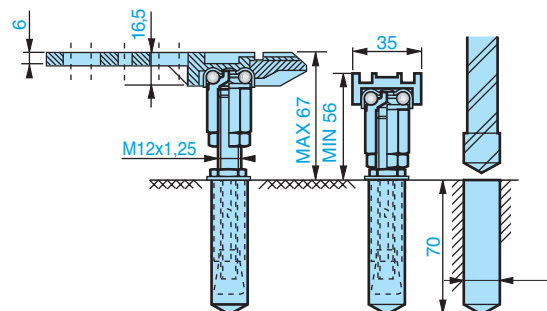
AC 31



## Codice / Code

Perno inferiore regolabile.  
Adjustable bottom pivot.

AC 252

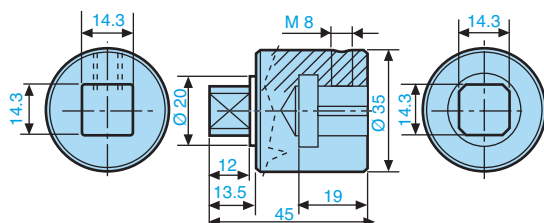


Kg max. 120

## Codice / Code

Prolunga perno.  
Spindle extension.

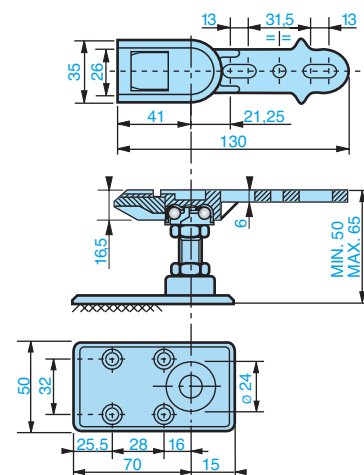
AC 242



## Codice / Code

AC 39

Perno inferiore regolabile.  
Adjustable bottom pivot.

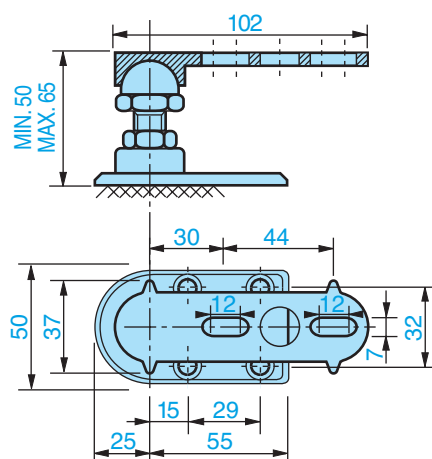


Kg max. 120

## Codice / Code

AC 27

Perno inferiore regolabile.  
Adjustable bottom pivot.



Kg max. 80



ASSA ABLOY Italia S.p.A.  
Via Bovaresa 13/15 - 40017 San Giovanni in Persiceto (BO) Italy  
Tel. +39 051 6812411 - Fax +39 051 827486  
info@assaabloy.it - www.assaabloy.it

ASSA ABLOY Italia S.p.A. si riserva di apportare in qualunque momento e senza preavviso le modifiche necessarie per migliorare ed evolvere le caratteristiche dei propri prodotti. Fotografie, illustrazioni e descrizioni sono da ritenersi indicative.  
ASSA ABLOY Italia S.p.A. reserves the right at any time and without notice, the necessary modifications in order to improve and evolve the characteristics of their products. Photographs, illustrations and descriptions ought to be considered as indicative.

H001E18 / 04-2011

ASSA ABLOY is the global leader in door opening solutions, dedicated to satisfying end-user needs for security, safety and convenience.

[www.assaabloy.com](http://www.assaabloy.com)

