

New Cilindric® hardware for glass doors and Metinox®  
handles with integrated lockmechanism

## Criteria for the design

Creating a new line of fittings according the market needs and the requirements of the customer

Making them functional and userfriendly for the owners and for the installers

Using top quality materials

## Wishes of the customers

BREAKING STANDARD DESIGN

STAINLESS STEEL AISI 316

COMBINED IN SIMPLE PURE SHAPES  
FOR DOUBLE ACTING DOORS

What did the customers like ?

What was the preferred material for  
use in modern architecture ?

What is the preferred functionality  
of a glass door ?

## Elements to avoid ?

- **Tollerances for installers**
- **No complicated glass preparations**
- **No design for only single action doors**
- **No use of materials that could only be used for interior applications**

To create a userfriendly product we wanted to avoid all inconveniences

Userfriendly for designers, for glass processors, for installers and for the enduser



cilindric®



a total solution for glass doors

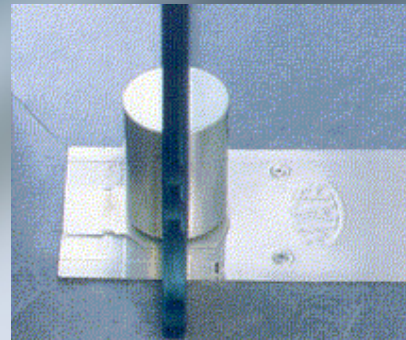
An ASSA ABLOY Group company **ASSA ABLOY**

## Features

- Simple, pure minimalist design
- Rotating, the fitting keeps shape
- Functional for the most comfortable double acting door
- Top quality stainless steel for interior and exterior applications



cilindric®



a total solution for glass doors

An ASSA ABLOY Group company **ASSA ABLOY**



cilindric®



a total solution for glass doors

An ASSA ABLOY Group company **ASSA ABLOY**

## Sliding door system with same design

Same high quality solid materials

Respecting same cylindrical design

Concentrating on shape by  
covering the technical elements

cilindric®



a total solution for glass doors

An ASSA ABLOY Group company **ASSA ABLOY**

## Exterior doors

The high quality of the material allows the use for exterior doors without any problem

As architects always try to use higher doors it became critical to position the locks

For security reasons bottom and top locking is preferable



cilindric®



a total solution for glass doors

an ASSA ABLOY Group company **ASSA ABLOY**

cilindric®



a total solution for glass doors

An ASSA ABLOY Group company **ASSA ABLOY**

cilindric®



a total solution for glass doors

An ASSA ABLOY Group company **ASSA ABLOY**

cilindric®



a total solution for glass doors

An ASSA ABLOY Group company **ASSA ABLOY**



cilindric®



a total solution for glass doors

An ASSA ABLOY Group company **ASSA ABLOY**





cilindric®



a total solution for glass doors

ASSA ABLOY Group company **ASSA ABLOY**



cilindric®



a total solution for glass doors

An ASSA ABLOY Group company **ASSA ABLOY**

cilindric®



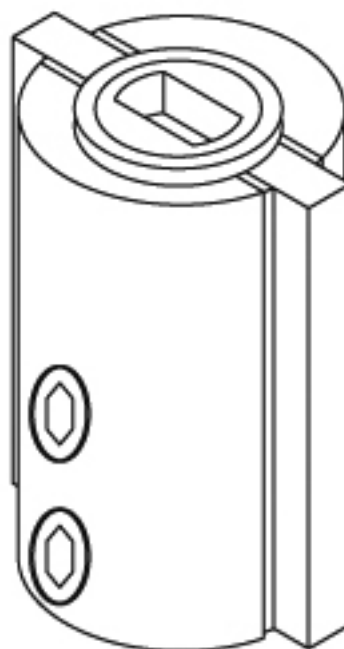
a total solution for glass doors

ASSA ABLOY Group company **ASSA ABLOY**



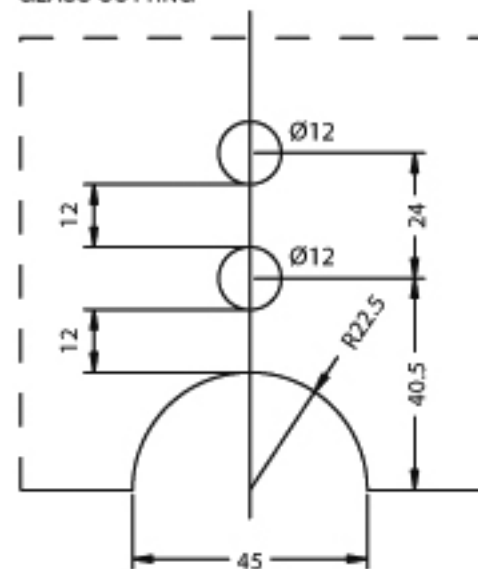


**C500**



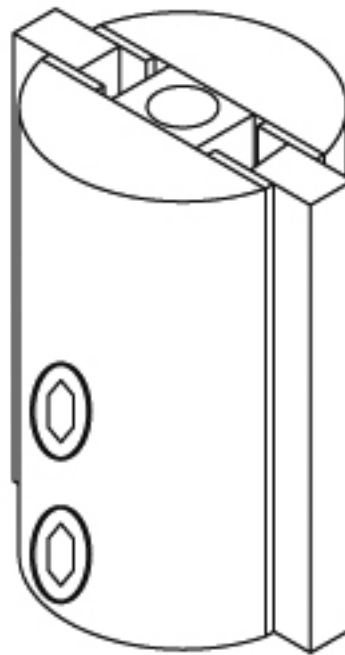
Ø:55mm  
height:75mm

GLASS CUTTING





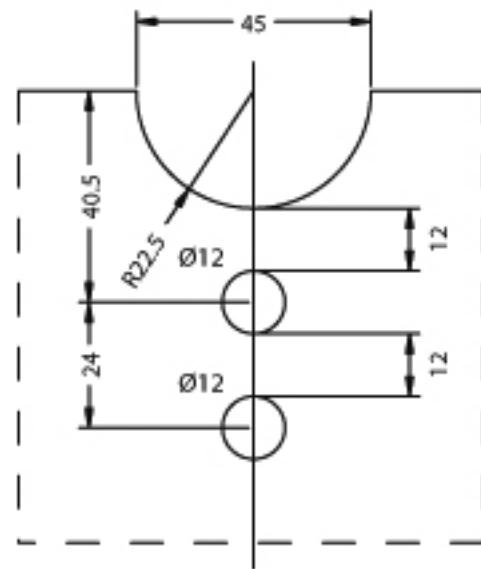
**C501**



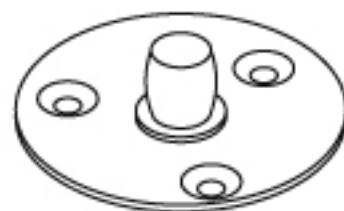
Ø:55mm

height:75mm

GLASS CUTTING



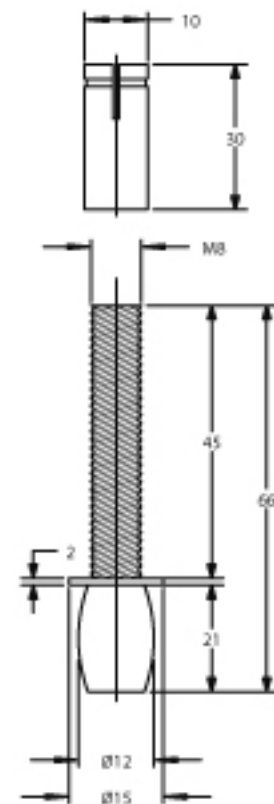
# C502



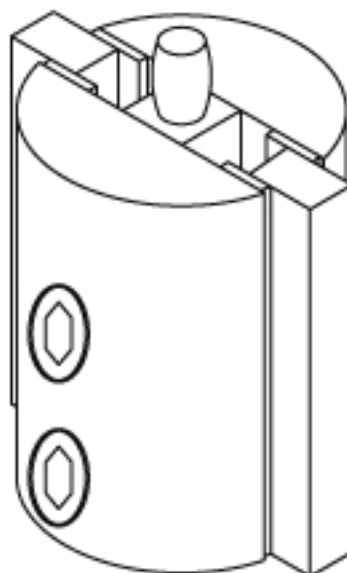
Ø:55mm

height:21mm

# V502.3



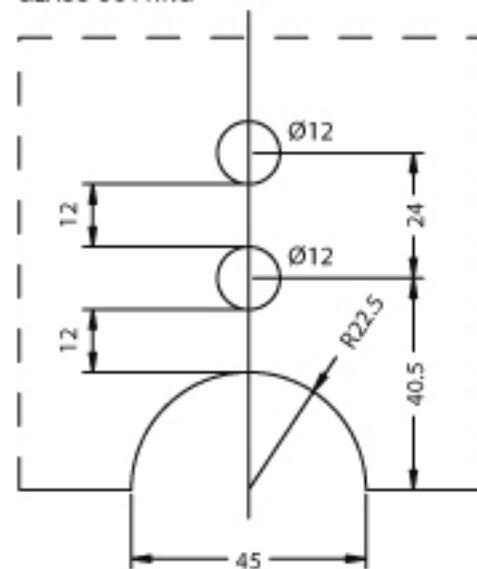
C511



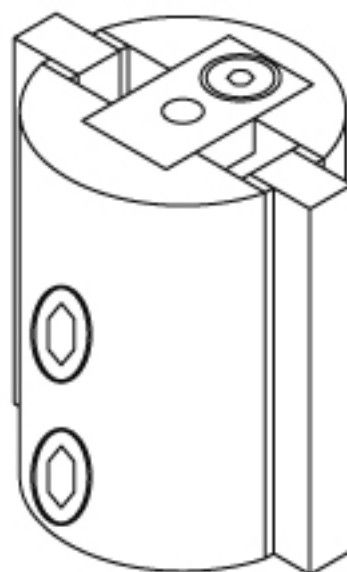
Ø:55mm

height:75mm

GLASS CUTTING



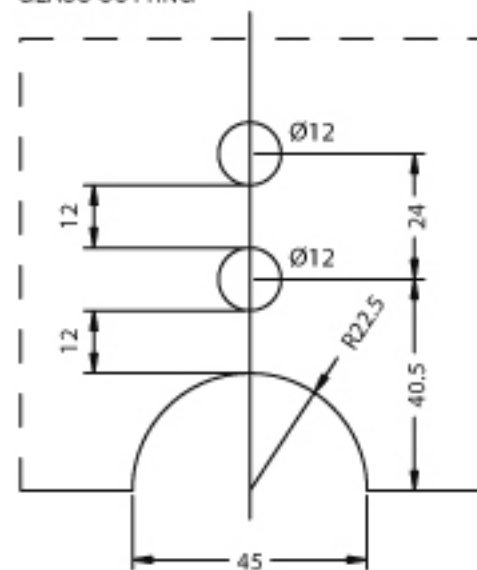
# C528A



Ø:55mm

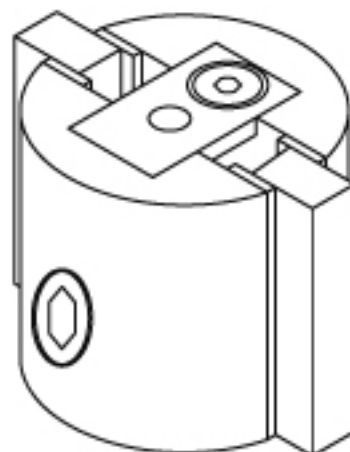
height:75mm

## GLASS CUTTING





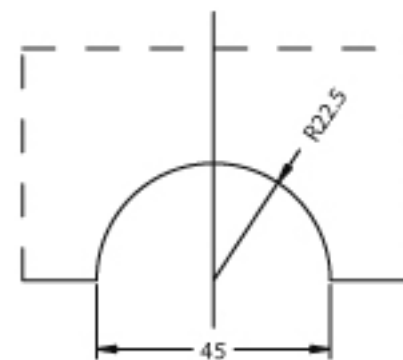
# C528B



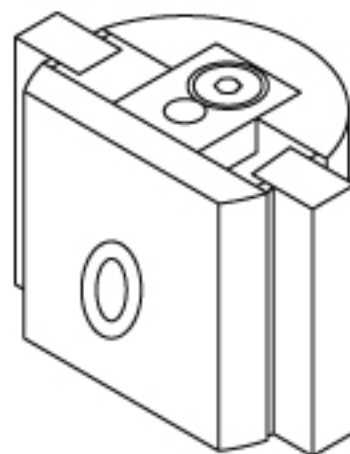
Ø:55mm

height:35mm

## GLASS CUTTING

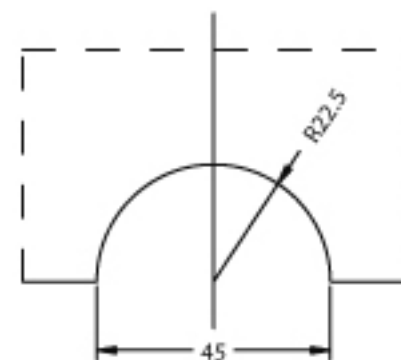


# C528C

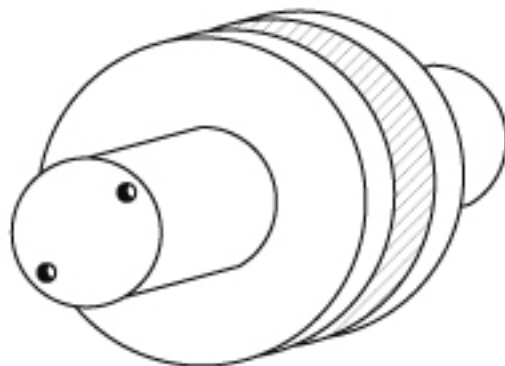


Ø:55mm  
height:35mm

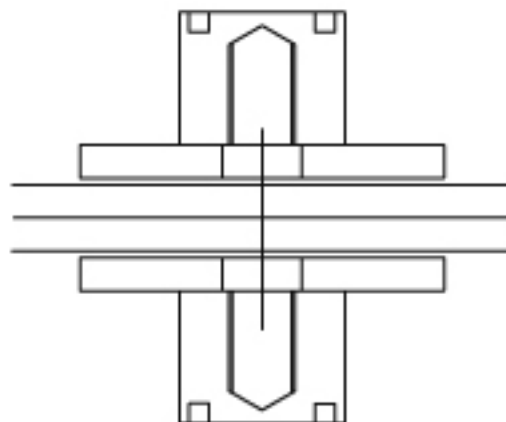
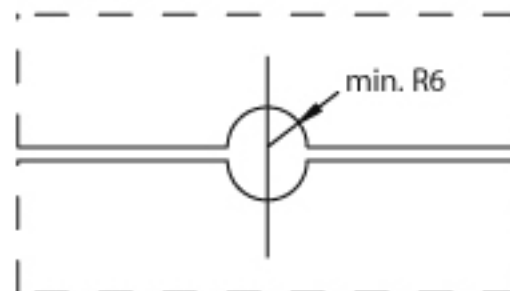
## GLASS CUTTING



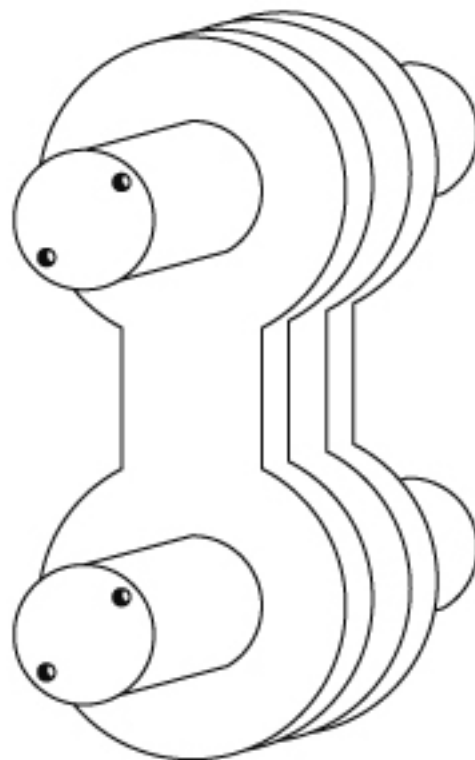
C581



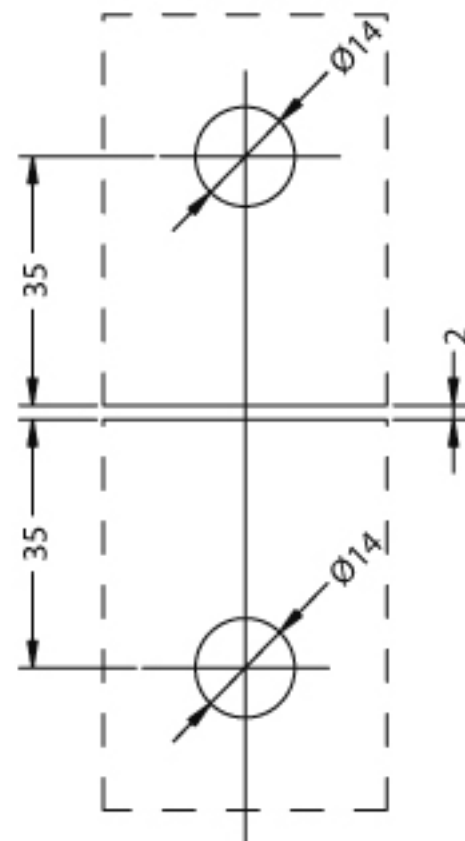
GLASS CUTTING



C582

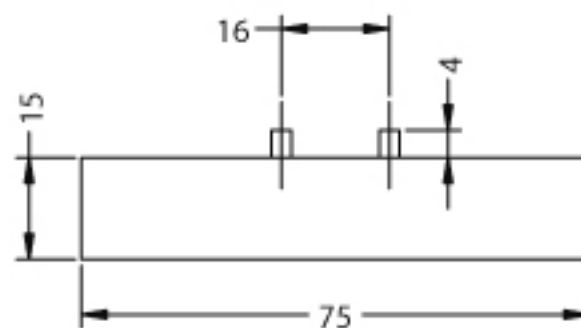
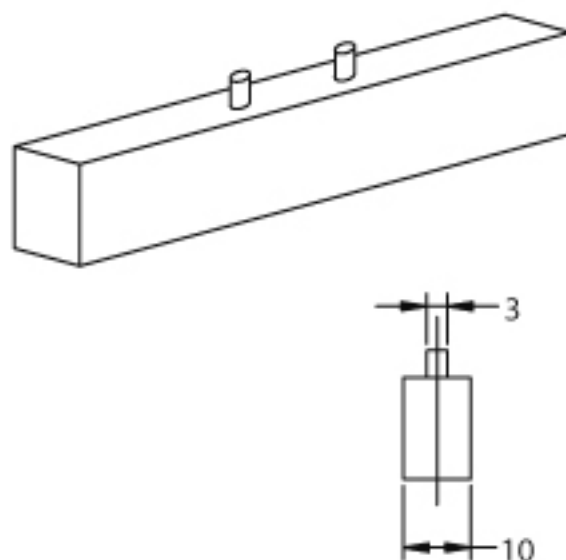


GLASS CUTTING

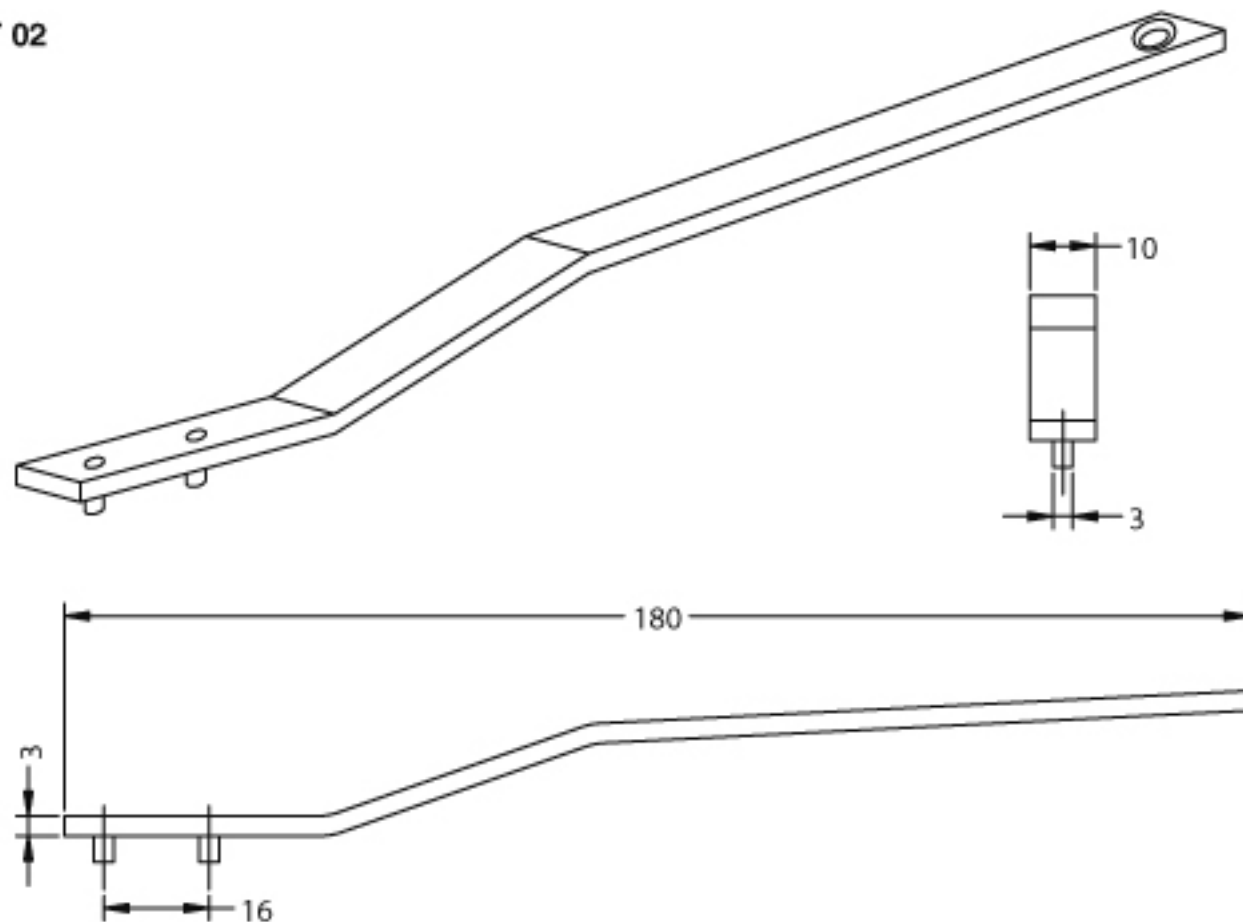




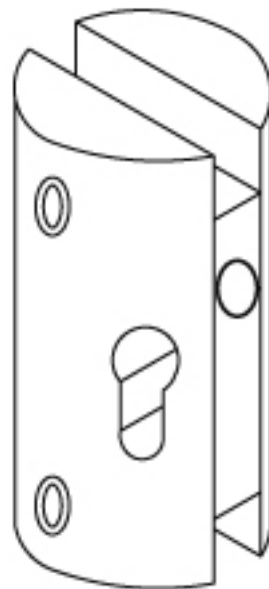
CT 01



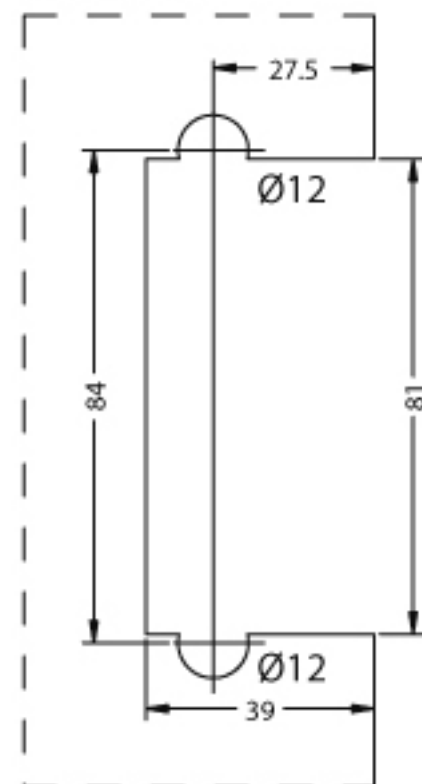
CT 02

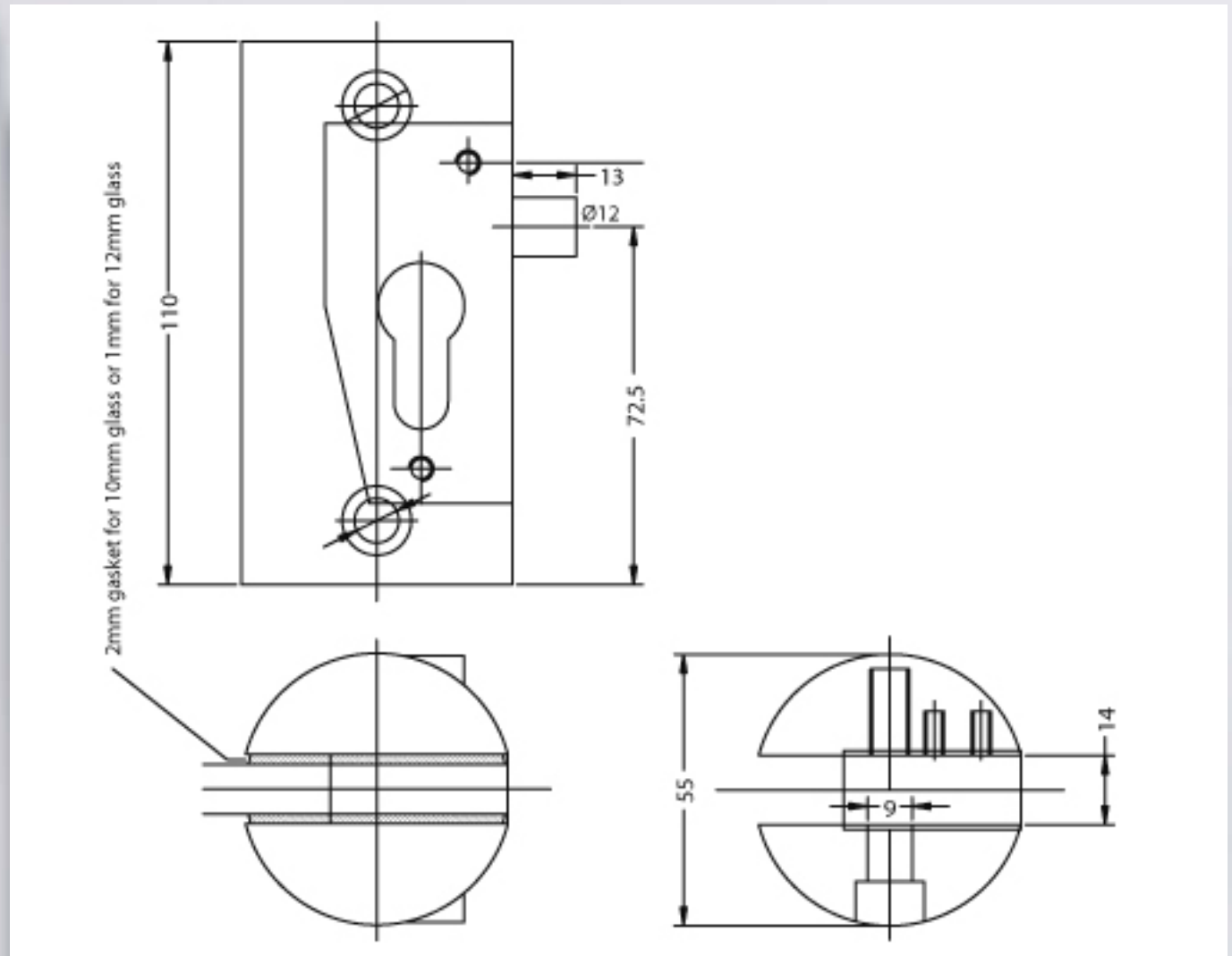


C 222



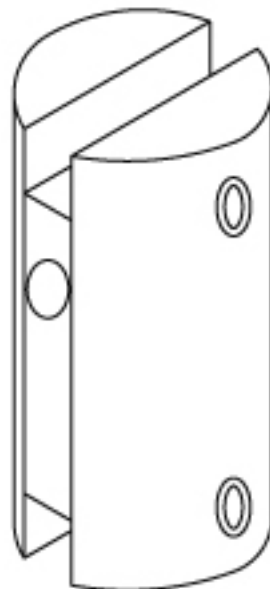
GLASS CUTTING



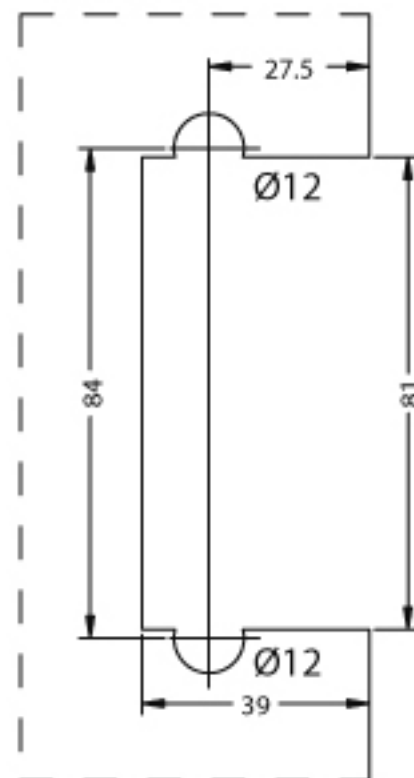




**C223**



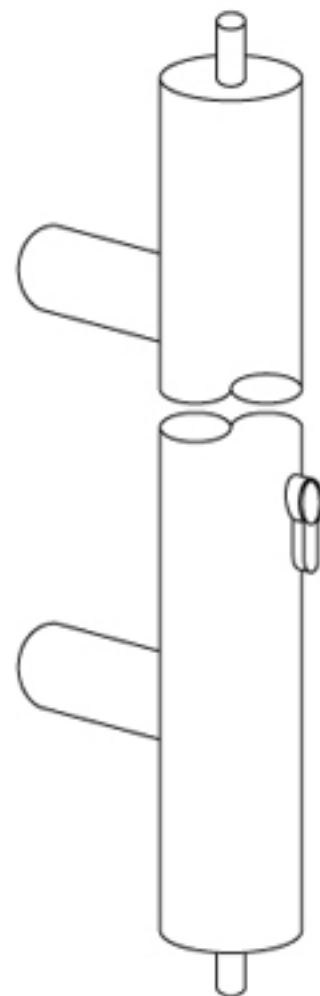
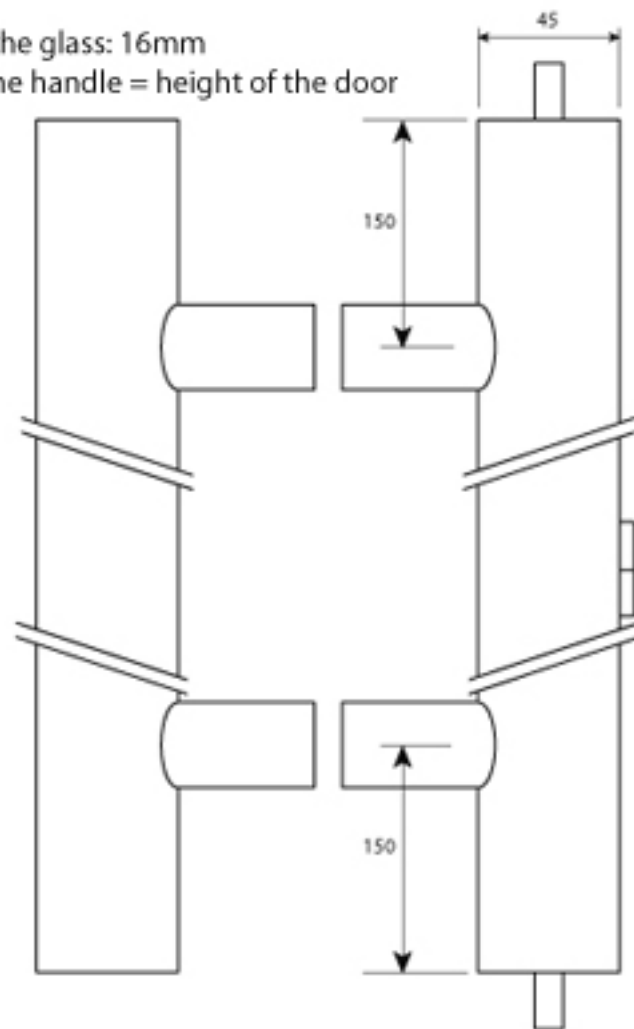
GLASS CUTTING



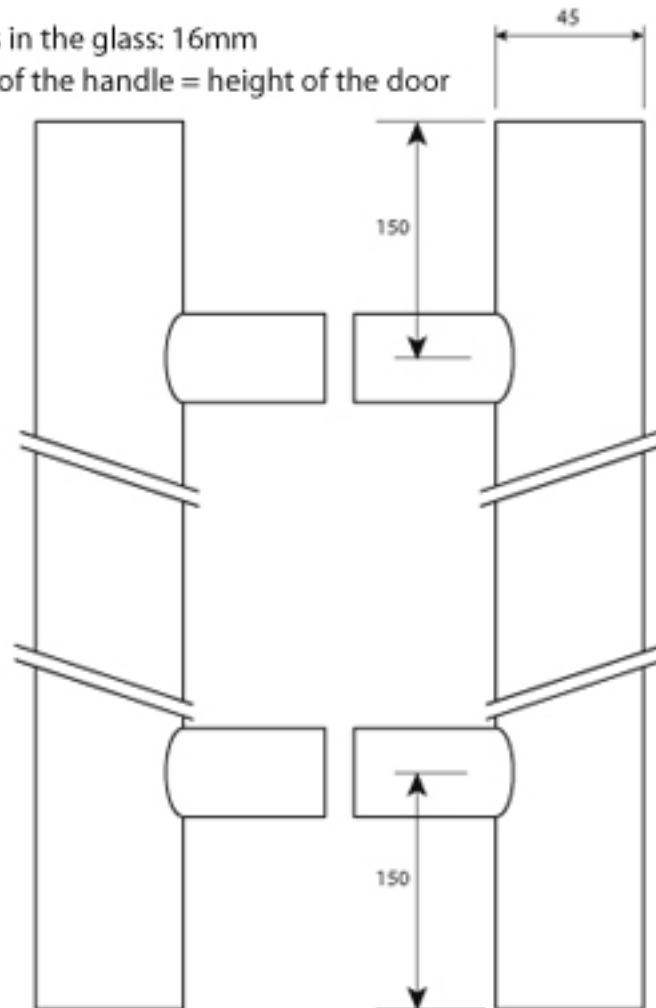
a total solution for glass doors



Ø holes in the glass: 16mm  
height of the handle = height of the door

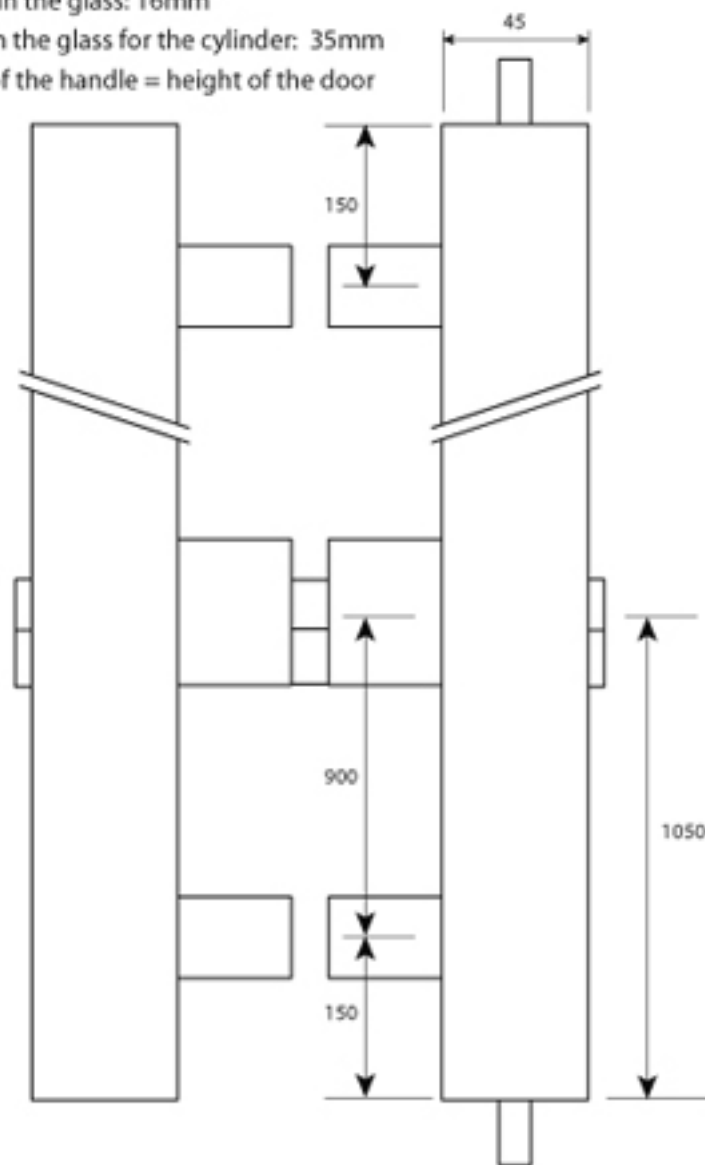


Ø holes in the glass: 16mm  
height of the handle = height of the door

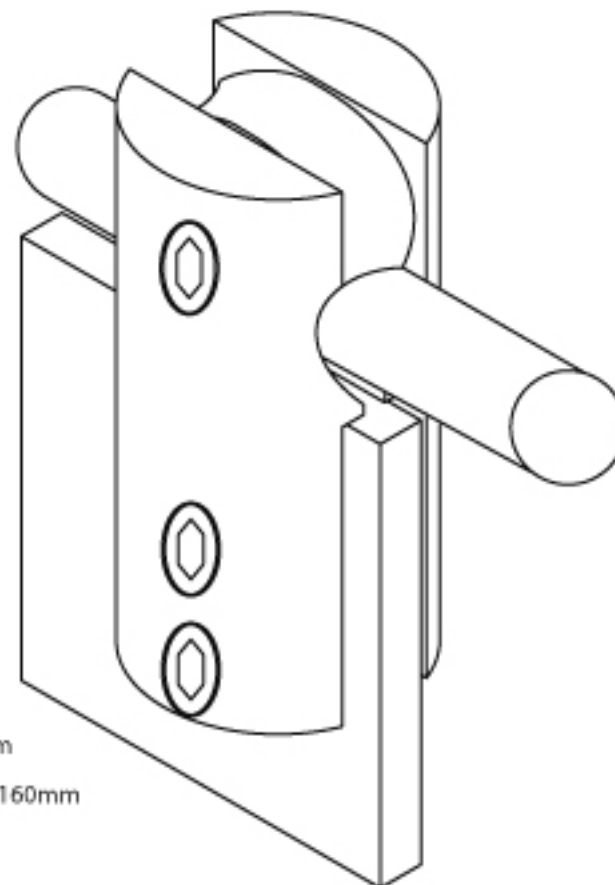




Ø holes in the glass: 16mm  
 Ø hole in the glass for the cylinder: 35mm  
 height of the handle = height of the door

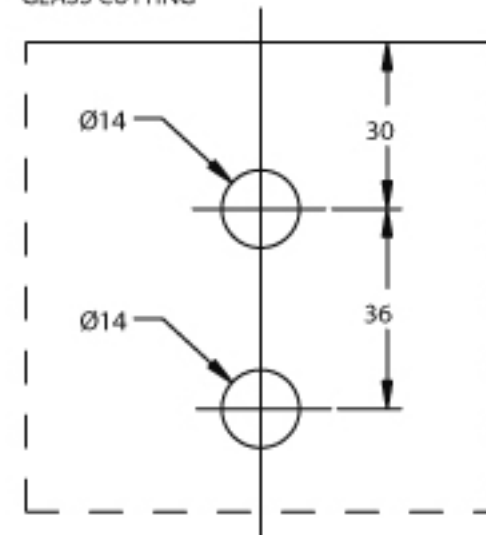


**CR01**

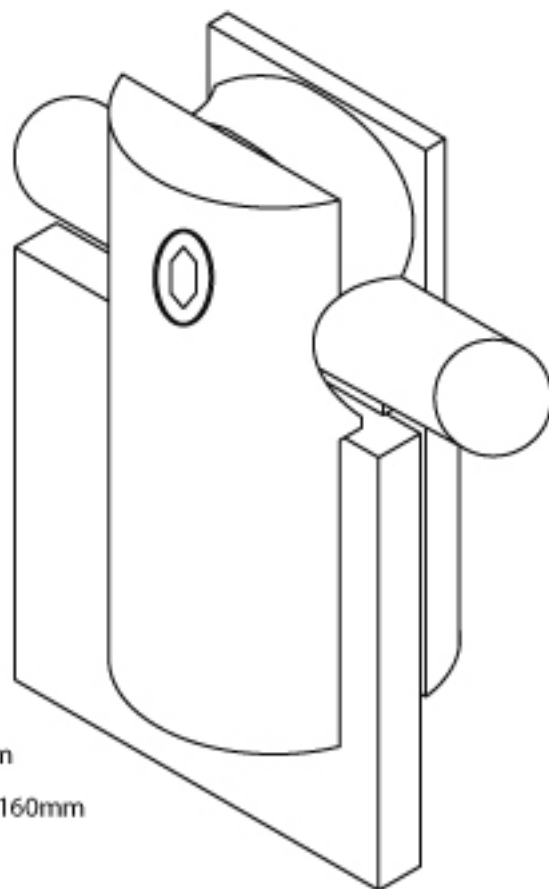


Ø:55mm  
height:160mm

**GLASS CUTTING**



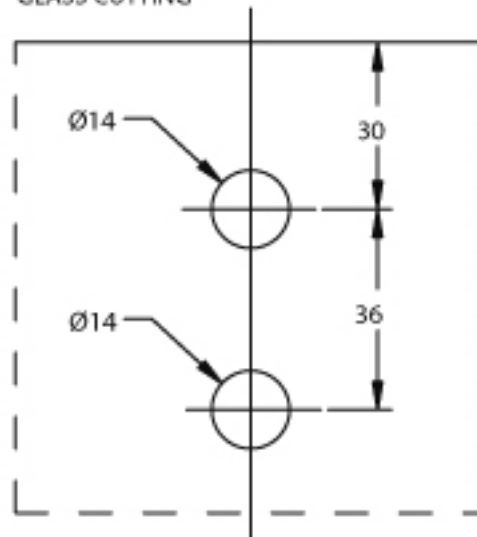
CR00



Ø:55mm

height:160mm

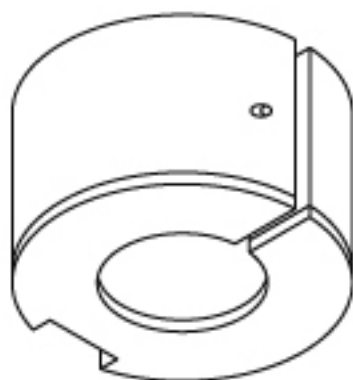
GLASS CUTTING



### CR03

Ø:50mm

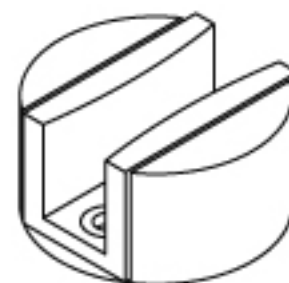
height:43mm



### CR04

Ø:40mm

height:28.5mm



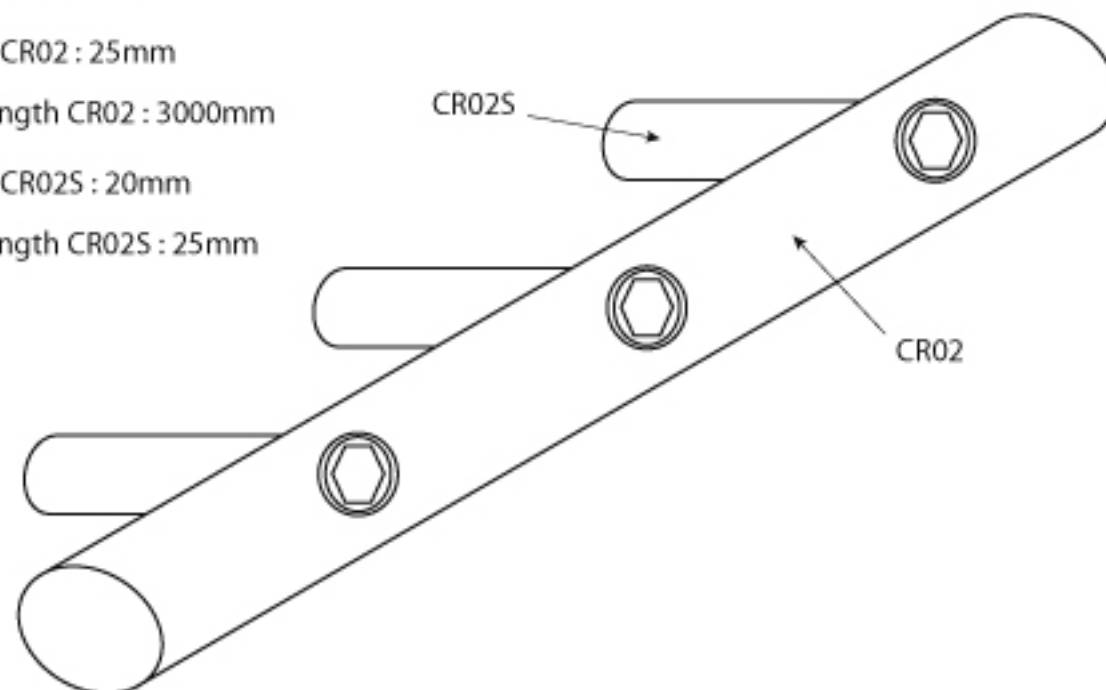
# **CR02 + CR02S**

Ø CR02 : 25mm

length CR02 : 3000mm

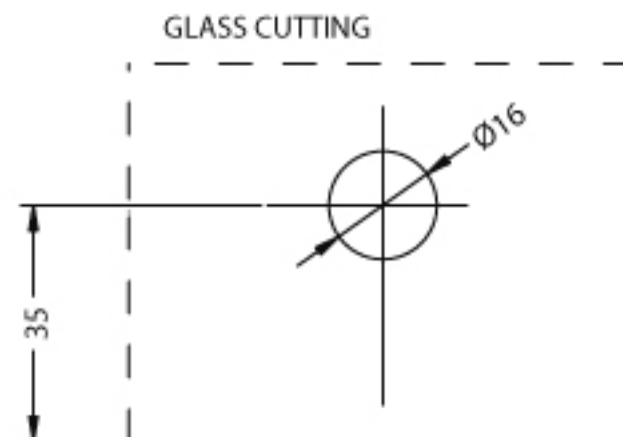
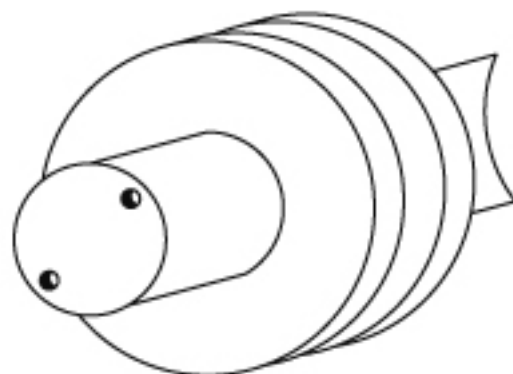
Ø CR02S : 20mm

length CR02S : 25mm

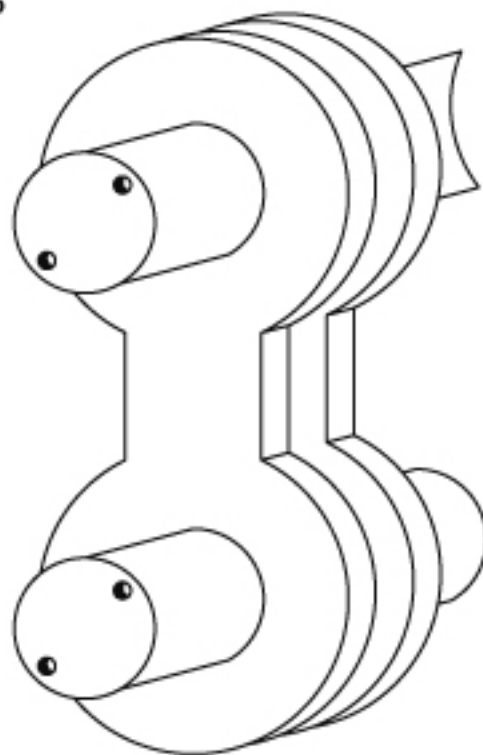




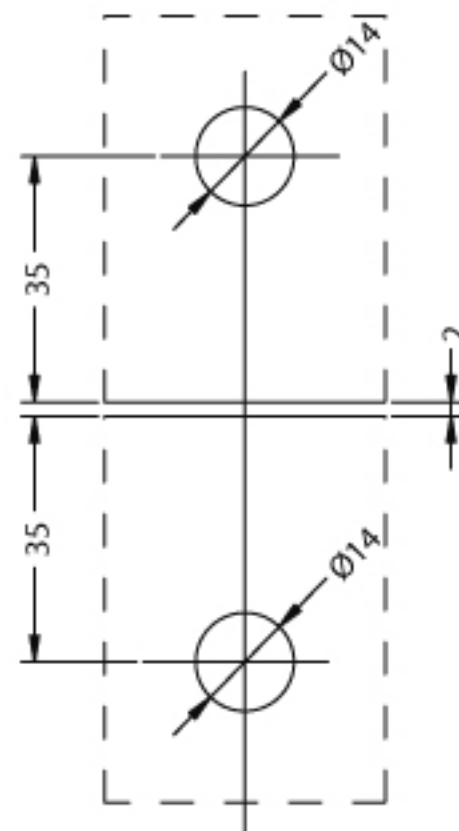
CR05

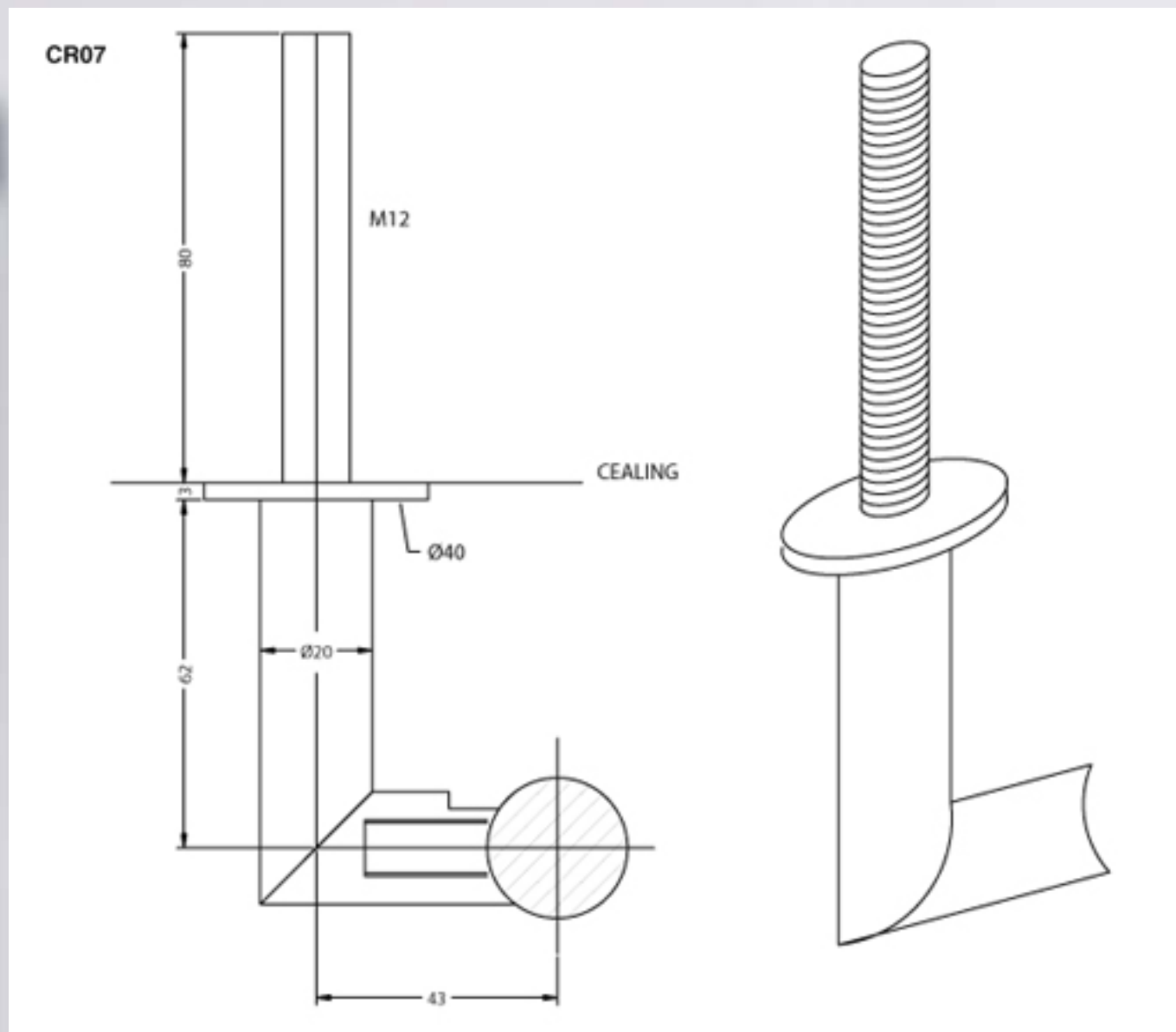


CR06

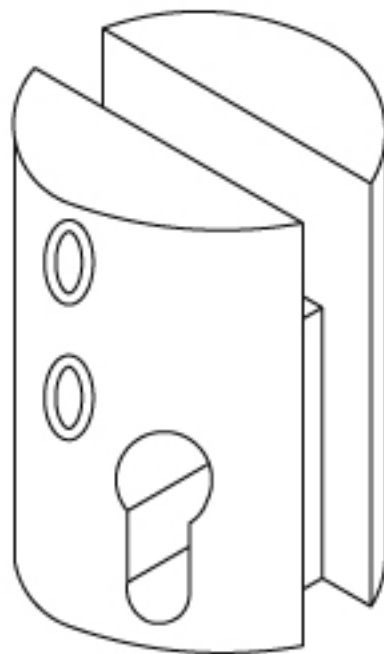


GLASS CUTTING





C514



GLASS CUTTING

